

**BLUMOTION S**  
One for three

# TIP-ON BLUMOTION for LEGRABOX and MOVENTO

Two functions – fascinatingly combined

[www.blum.com](http://www.blum.com)

 **blum**<sup>®</sup>





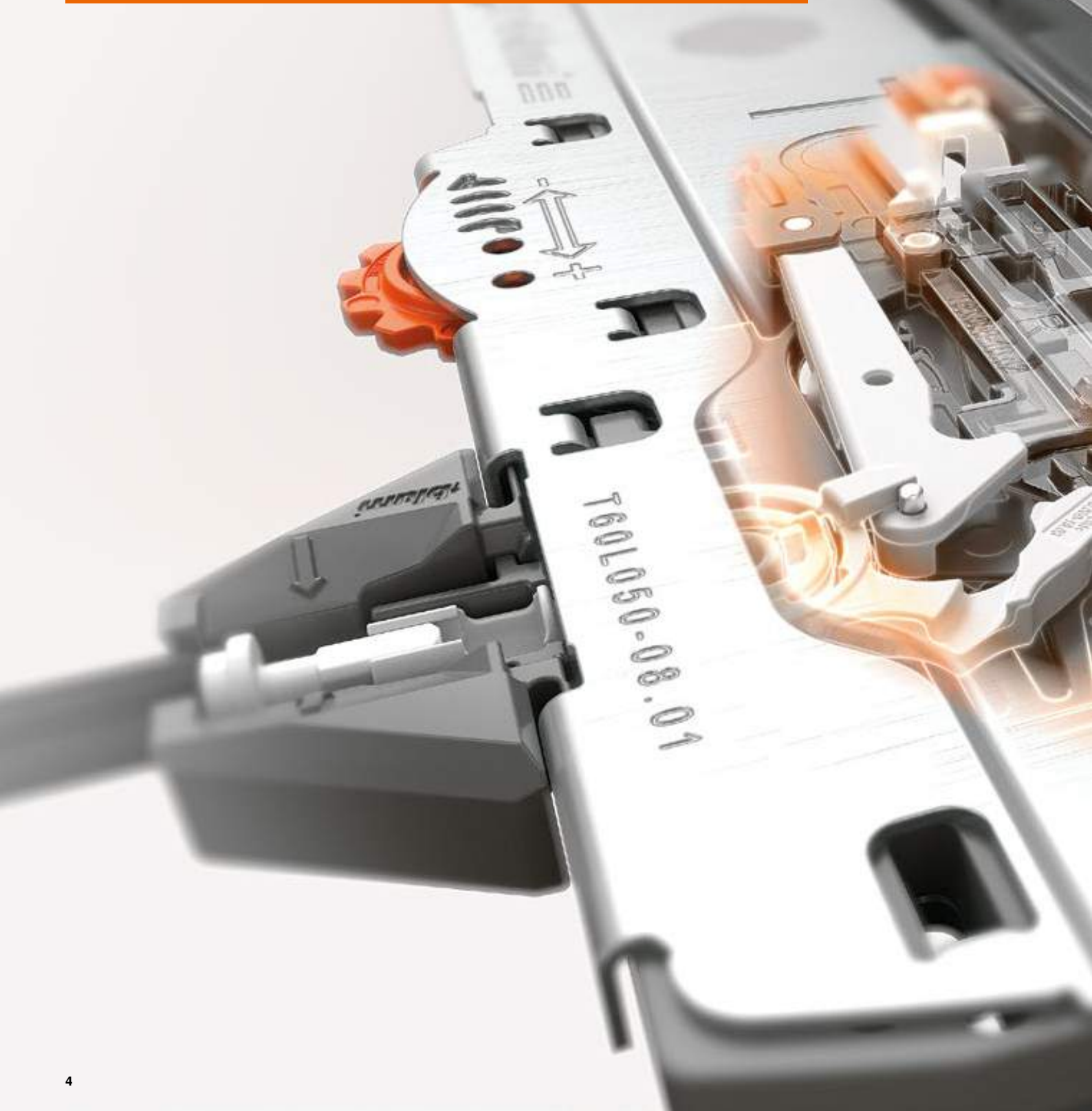
## Contents

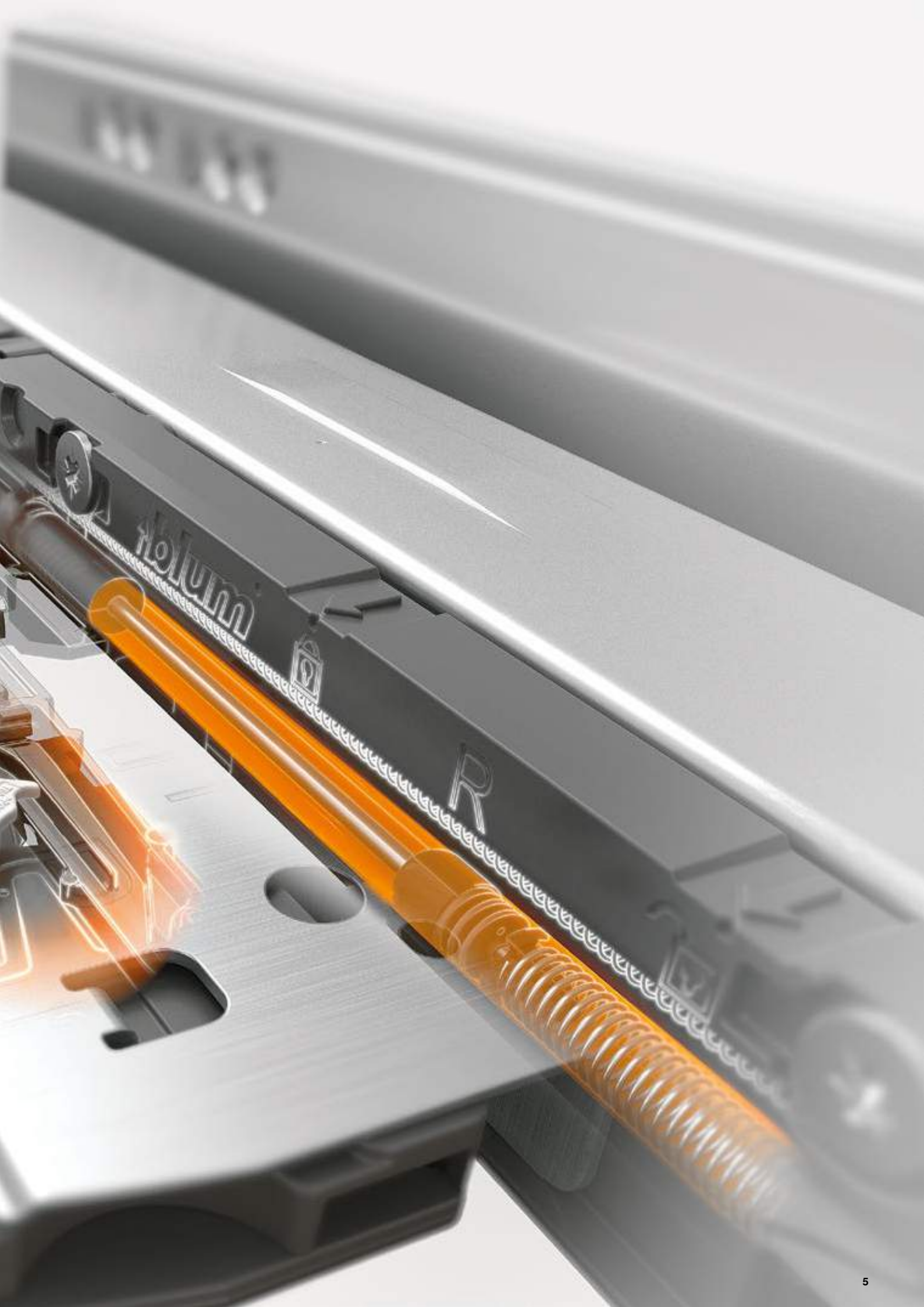
- 4** Innovative technology
- 6** Fascinating combination
- 8** High functionality
- 10** Extra convenience guaranteed
- 12** Easy assembly
- 14** TIP-ON BLUMOTION  
for all living areas
- 22** Clear programme
- 24** Well-designed product details
- 26** Technical overview – LEGRABOX
- 38** Technical overview – MOVENTO
- 46** Blum

# Innovative technology

The focus of all our product development: our furniture users' many different needs. The result: a solution that provides optimal support for motion – 100% mechanically. TIP-ON BLUMOTION for LEGRABOX and MOVENTO combines the advantages of the TIP-ON mechanical opening support system with reliable BLUMOTION dampening for silent and effortless closing.

 blum







A simple touch,



and the pull-out opens.



A light push, and it closes.



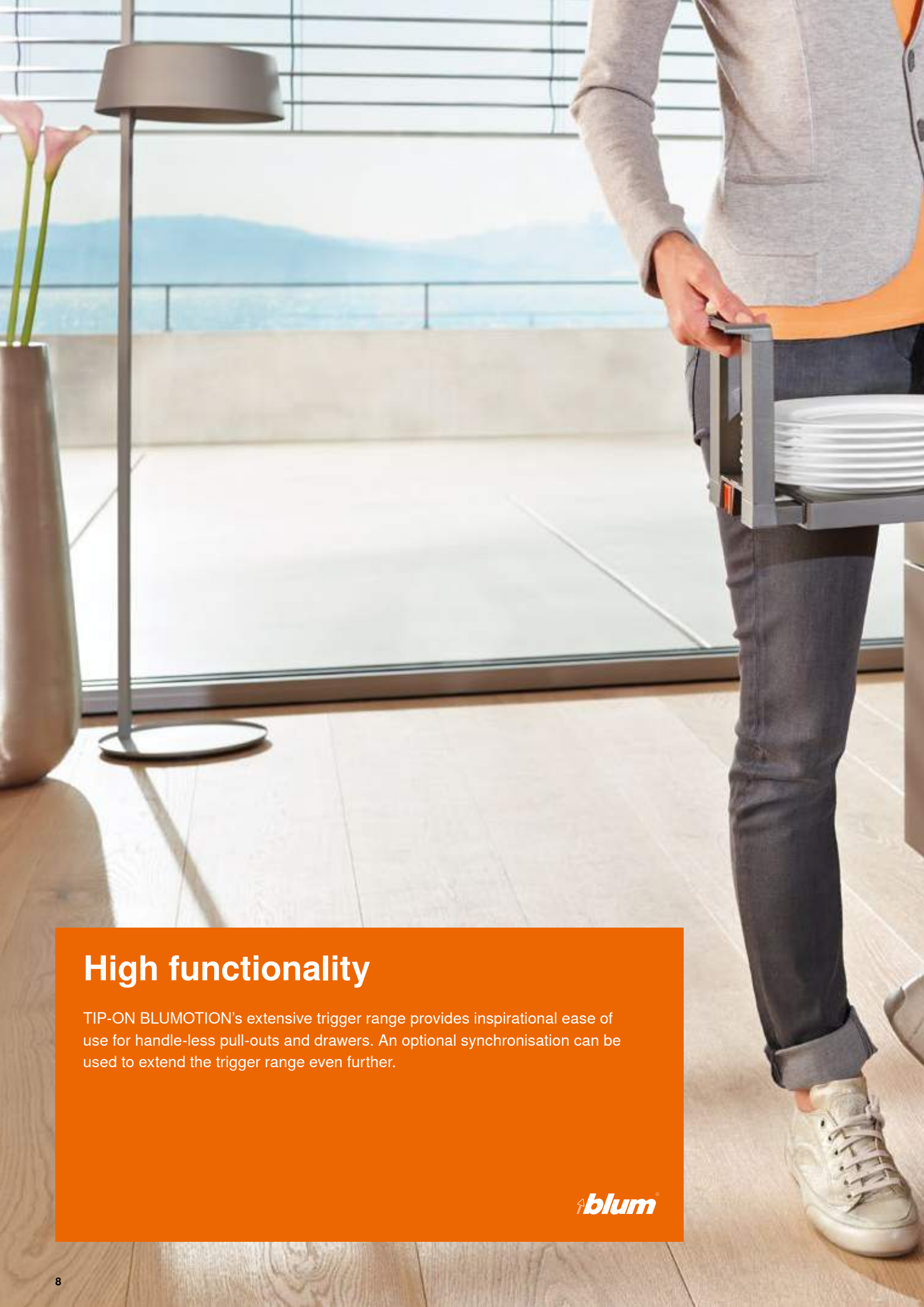


➤ Watch TIP-ON  
BLUMOTION film:  
[www.blum.com/  
trailertiponblumotion](http://www.blum.com/trailertiponblumotion)

## Fascinating combination

Opens with just a light touch, has a smooth running action and closes silently and effortlessly – experience completely harmonious and convenient motion with TIP-ON BLUMOTION technology for LEGRABOX and MOVENTO. And the best part: the motion is assisted 100% mechanically.

 **blum**



## High functionality

TIP-ON BLUMOTION's extensive trigger range provides inspirational ease of use for handle-less pull-outs and drawers. An optional synchronisation can be used to extend the trigger range even further.

 **blum**





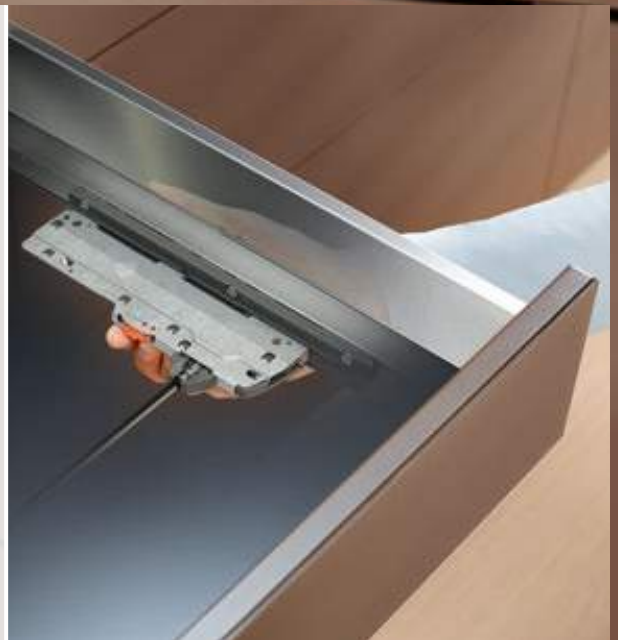
#### **Small front gap**

TIP-ON BLUMOTION can be adjusted to have a small front gap of 2.5 mm, meaning it is also ideal for kitchens.



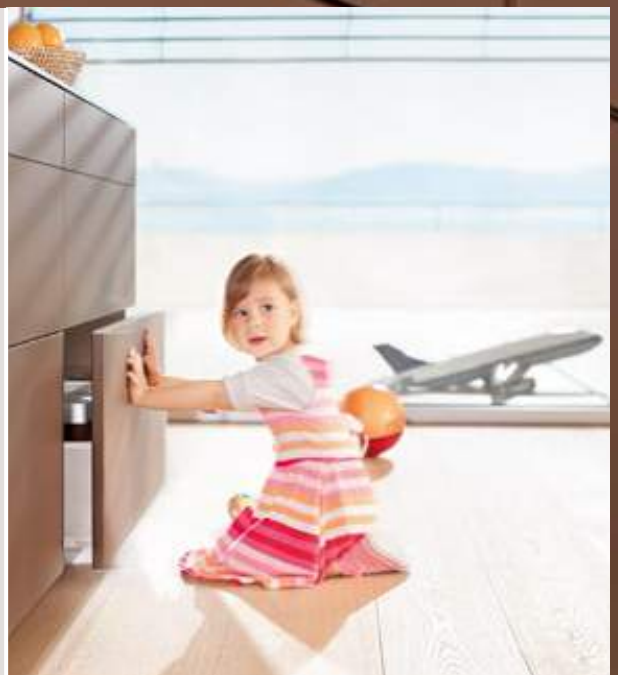
#### **Four-dimensional adjustment**

The four-dimensional adjustment ensures a precise gap layout. The integrated depth adjustment can be made tool-free using the adjustment wheel.



#### **Intelligent mechanics**

TIP-ON BLUMOTION is more user-friendly and gives you a choice: pull or push to open.





## Extra convenience guaranteed

With TIP-ON BLUMOTION, it is possible to refine any design concept with well-thought-out functionality – particularly if the design of the furniture avoids the use of handles completely, or if handle elements are being used for accentuation purposes. Fitted with TIP-ON BLUMOTION, all pull-outs will have one thing in common: their ease of use will be extra impressive.

 **blum**

### **Pull-outs with j-handles**

Individual design with integrated TIP-ON BLUMOTION: simple and ergonomic opening of pull-outs with a light touch even when your hands are full.



### **Pull-outs with handles as a design element**

Sometimes, handles simply give furniture that extra something. TIP-ON BLUMOTION supports special design ideas by adding more functionality.



### **Pull-outs with recessed grips**

TIP-ON BLUMOTION makes it easier to open pull-outs with recessed grips: a light touch is all that is needed, anywhere on the pull-out, thanks to the extensive trigger range.



# Easy assembly

TIP-ON BLUMOTION for LEGRABOX and MOVENTO is the perfect mechanical solution for handle-less furniture in all living areas. Pull-outs and drawers can be implemented in the usual manner. Practical templates from Blum can be used to make installation and assembly easier.

 **blum**



➤ Watch assembly film:  
[www.blum.com/  
assemblytiponblumotion](http://www.blum.com/assemblytiponblumotion)



**No additional cabinet and drawer assembly**

TIP-ON BLUMOTION can be used with standard cabinets and fronts. There is no need for additional assembly, e.g. for recessed grips or handle strips.



**Familiar drilling positions**

The usual LEGRABOX and MOVENTO drilling positions can be used for TIP-ON BLUMOTION too.



**Simple, tool-free assembly**

The TIP-ON BLUMOTION unit can be assembled tool-free, as can all the other components.



**Precise front gap adjustment**

The adjustment template can be used to precisely and conveniently adjust the front gap to 2.5 mm for LEGRABOX and MOVENTO.

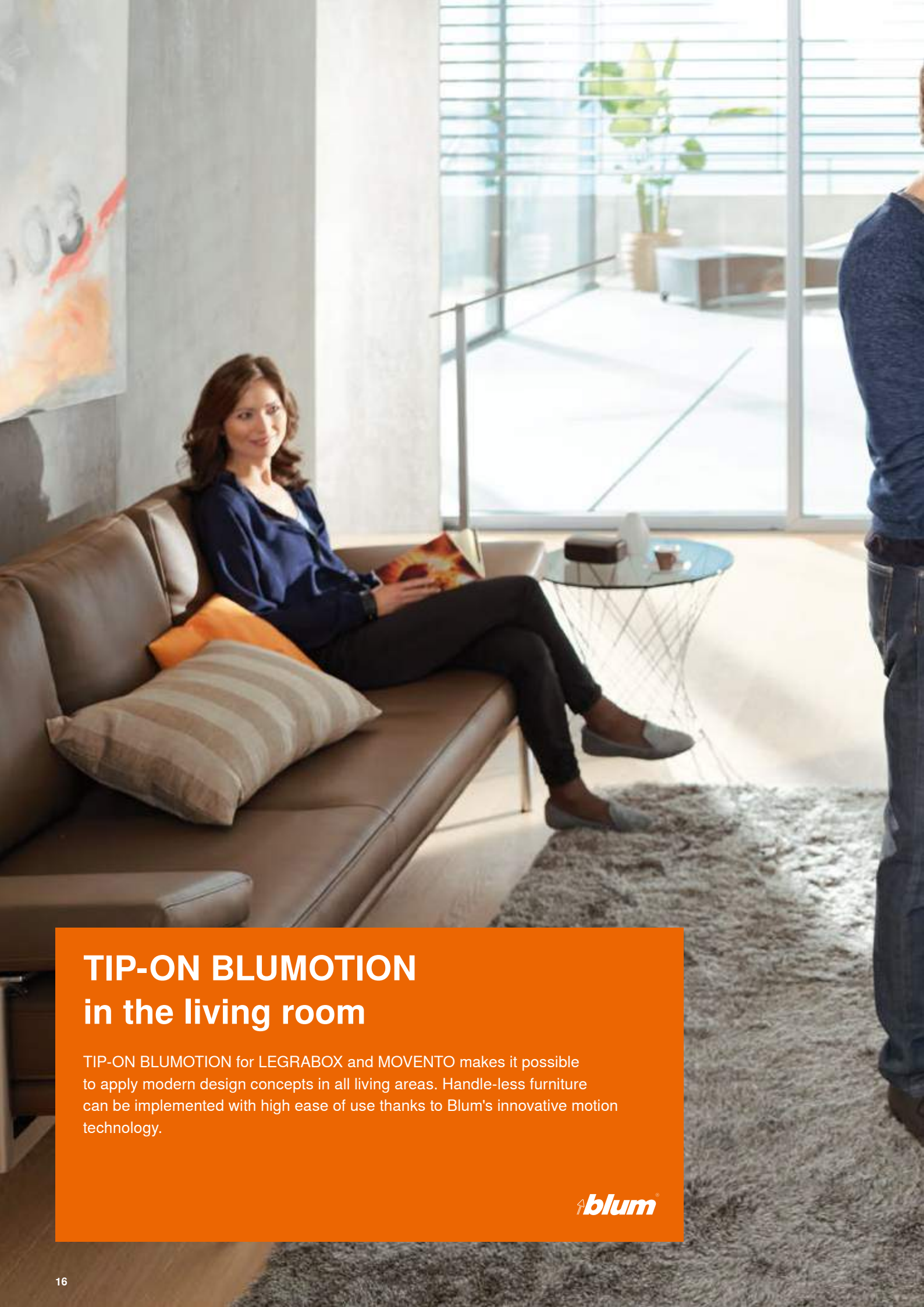


## TIP-ON BLUMOTION in the kitchen

Everyday kitchen use places extremely high demands on a piece of furniture's quality of motion. TIP-ON BLUMOTION for LEGRABOX and MOVENTO provides inspiration here with its undeniable ease of use.

 **blum**





## TIP-ON BLUMOTION in the living room

TIP-ON BLUMOTION for LEGRABOX and MOVENTO makes it possible to apply modern design concepts in all living areas. Handle-less furniture can be implemented with high ease of use thanks to Blum's innovative motion technology.

 **blum**





# TIP-ON BLUMOTION in the bathroom

TIP-ON BLUMOTION for LEGRABOX and MOVENTO also ensures high quality of motion in the bathroom for the lifetime of the furniture. The zinc-plated steel and nylon components offer optimum corrosion protection even at high levels of humidity.

 **blum**





## TIP-ON BLUMOTION in the hall

With TIP-ON BLUMOTION for LEGRABOX and MOVENTO, handle-less furniture can be implemented in all living areas, including the hall. With an impressively smooth running action, even high and wide fronts can be opened with just a light touch and close silently and effortlessly.

 **blum**



# Clear programme

The basis of TIP-ON BLUMOTION are the specially designed BLUMOTION S runners for LEGRABOX and MOVENTO. All other product components are compatible with both drawer systems. The large number of standard parts form a compact programme that opens up a wide range of possibilities when designing handle-less furniture.



1

2



➤ Fittings selection made easy with the online product configurator at [www.blum.com/configurator](http://www.blum.com/configurator)

**TIP-ON BLUMOTION components**

1. LEGRABOX BLUMOTION S cabinet profile
2. MOVENTO BLUMOTION S runner
3. TIP-ON BLUMOTION unit
4. TIP-ON BLUMOTION latch
5. TIP-ON BLUMOTION synchronisation adapter
6. TIP-ON BLUMOTION synchronisation linkage



# Well-designed product details

Many of the TIP-ON BLUMOTION components can be used for both LEGRABOX and MOVENTO. This means that TIP-ON BLUMOTION is a suitable solution for any application.



## BLUMOTION S – One solution, three technologies

The BLUMOTION S runner offers the flexibility to implement three different motion technologies, SERVO-DRIVE, BLUMOTION and TIP-ON BLUMOTION, with just one runner.

### LEGRABOX BLUMOTION S cabinet profile

40 and 70 kg  
NL 270–650 mm



### MOVENTO BLUMOTION S runner

40 and 60 kg  
NL 270–750 mm





## TIP-ON BLUMOTION units and TIP-ON BLUMOTION latch

Adjusted for weight ranges and nominal lengths, the TIP-ON BLUMOTION unit is available in designs of varying strengths. For easy differentiation, each version is a different colour. The latch can be universally used for all TIP-ON BLUMOTION units.

### For LEGRABOX/MOVENTO



**S0**  
< 10 kg  
NL 270–300 mm (LEGRABOX) or 320 mm (MOVENTO)  
White



**S1**  
10–20 kg  
NL 270–300 mm (LEGRABOX) or 320 mm (MOVENTO)  
Light grey



**L1**  
0–20 kg  
NL 350–650 mm (LEGRABOX) or 750 mm (MOVENTO)  
Light grey



**L3**  
15–40 kg  
NL 350–650 mm (LEGRABOX) or 750 mm (MOVENTO)  
Dust grey



**L5**  
35–70 kg (LEGRABOX) or 35–60 kg (MOVENTO)  
NL 350–650 mm (LEGRABOX) or 750 mm (MOVENTO)  
Black

### For LEGRABOX sink pull-out



**L1**  
0–20 kg  
NL 350–600 mm  
Light grey



**L3**  
15–40 kg  
NL 350–600 mm  
Dust grey

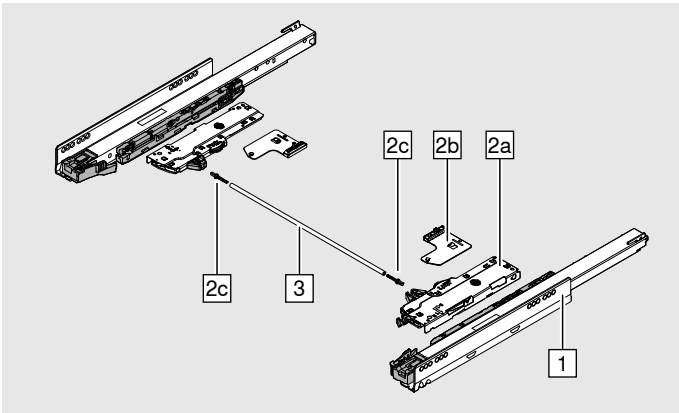


## TIP-ON BLUMOTION for LEGRABOX – technical overview

 **blum**

## Order specification

## TIP-ON BLUMOTION for LEGRABOX



1	Cabinet profiles left/right		
	NL	40 kg	70 kg
	270 mm	750.2701S	
	300 mm	750.3001S	
	350 mm	750.3501S	
	400 mm	750.4001S	
	450 mm	750.4501S	753.4501S
	500 mm	750.5001S	753.5001S
	550 mm	750.5501S	753.5501S
	600 mm	750.6001S	753.6001S
	650 mm		753.6501S

Make the right calculations for your TIP-ON BLUMOTION unit using the product configurator [www.blum.com/configurator](http://www.blum.com/configurator)

2	TIP-ON BLUMOTION set			
	<b>Consisting of:</b>			
	2a   2x TIP-ON BLUMOTION unit 2b   2x TIP-ON BLUMOTION latch 2c   2x synchronisation adapter			
	NL (mm)	Unit	Weight (kg)*	
	270–300	S0	≤ 10	T60L7040
		S1	> 10–20	T60L7140
	350–650	L1**	≤ 20	T60L7340
		L3	15–40	T60L7540
		L5***	35–70	T60L7570

2	TIP-ON BLUMOTION set for sink pull-out <sup>1</sup>			
	<b>Consisting of:</b>			
	2a   2x TIP-ON BLUMOTION unit 2b   2x TIP-ON BLUMOTION latch 2c   2x synchronisation adapter			
	NL (mm)	Unit	Weight (kg)*	
	350–600	L1**	≤ 20	T60L9340
		L3	15–40	T60L9540

<sup>1</sup> Possible for LWs ≥ 294 mm and NL ≥ 350 mm

3	TIP-ON BLUMOTION synchronisation linkage		
	Possible for LWs ≥ 294 mm		
	Suitable for LWs up to 1370 mm		
			T60.1125W
	Shaft cutting: LW - 247 mm Sink pull-out shaft cutting: LW - 267 mm		

For narrow LWs (alternative to 3)	
	<b>TIP-ON BLUMOTION one-part synchronisation</b>
	Symmetrical LW 245–293 mm
	Cutting: LW - 221 mm
	T60.300D

### Accessories

TIP-ON BLUMOTION synchronisation adapter	
	Symmetrical
	When used with 3, 2 pieces required each time
	LW ≥ 294 mm
	T60.000D

Front gap template for TIP-ON BLUMOTION LEGRABOX/MOVENTO	
	For setting the front gap to 2.5 mm
	65.5631

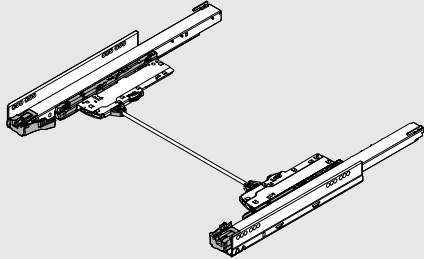
LW Internal cabinet width  
NL Nominal length

\* Recommended weight ranges (total weight of pull-out)  
for optimum opening and closing function  
\*\* Can only be combined with 40 kg (750.)  
\*\*\* Can only be combined with 70 kg (753.)

# TIP-ON BLUMOTION for LEGRABOX



## Planning

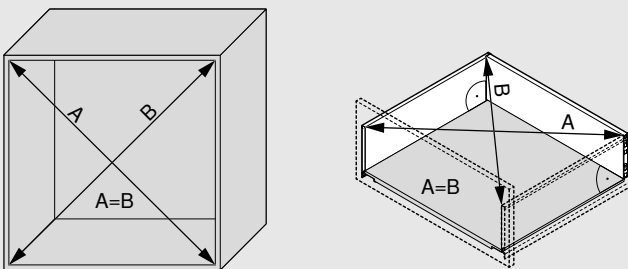


- TIP-ON BLUMOTION for LEGRABOX uses the same standard installation dimensions as for LEGRABOX. Please refer to the relevant product brochure or catalogue for this information
- The following planning graphics are shown as an example for a drawer with height M



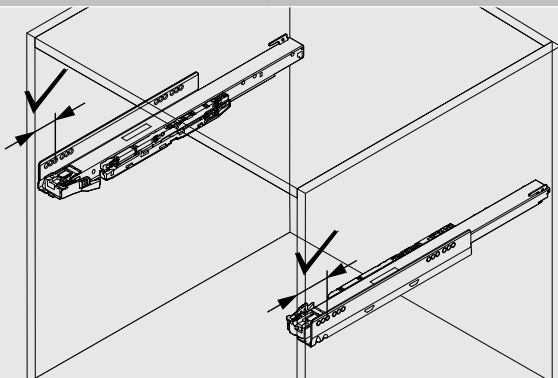
More information on LEGRABOX:  
[www.blum.com/downloadslegrabox](http://www.blum.com/downloadslegrabox)

## Furniture construction



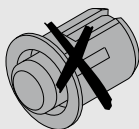
To ensure a front gap of at least 2.5 mm, precise manufacturing is required, so it should be ensured that planned measurements and angle accuracy are adhered to.

## Depth position



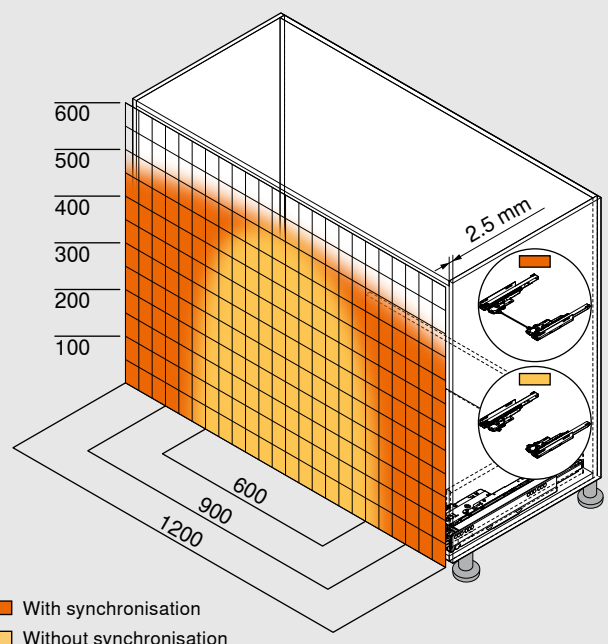
Observe exact depth position of both cabinet profiles.

## Front assembly – do not assemble bumpers



Bumpers should not be assembled for TIP-ON BLUMOTION!

## TIP-ON BLUMOTION synchronisation



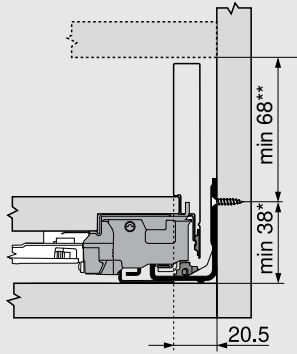
With synchronisation  
 Without synchronisation

Diagram showing example for height C, NL 500 mm

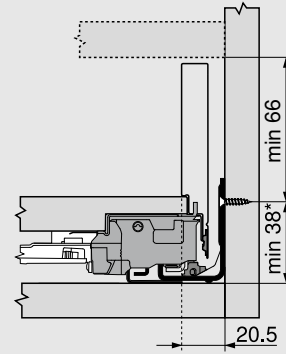
An extensive trigger range is achieved even with a low minimum front gap of just 2.5 mm. To achieve optimal function and to extend the trigger range, we recommend using a synchronisation.

Space requirements in the cabinet

Drawer/High fronted pull-out



Inner drawer/Inner pull-out



Latch set (Z17.0M07) cannot be used in combination with TIP-ON BLUMOTION.

Cabinet profile screw position – 40 kg

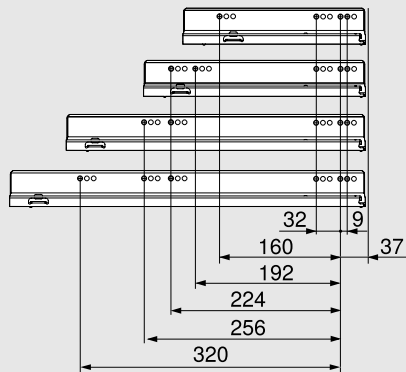
NL (mm)

270

300, 350

400–500

600



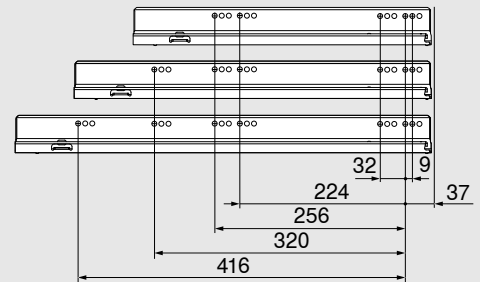
Cabinet profile screw position – 70 kg

NL (mm)

450

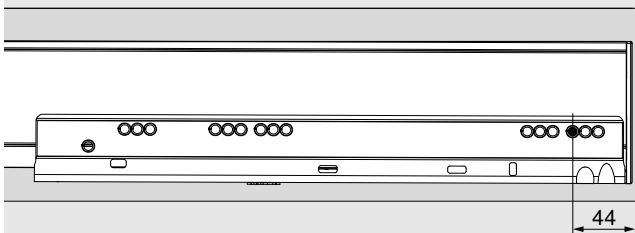
500–600

650

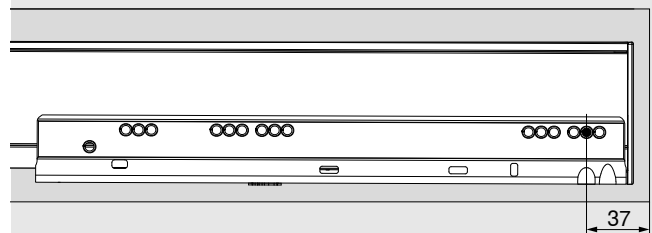


Screw position, TIP-ON BLUMOTION for inner drawers and inner pull-outs

Variant 1



Variant 2

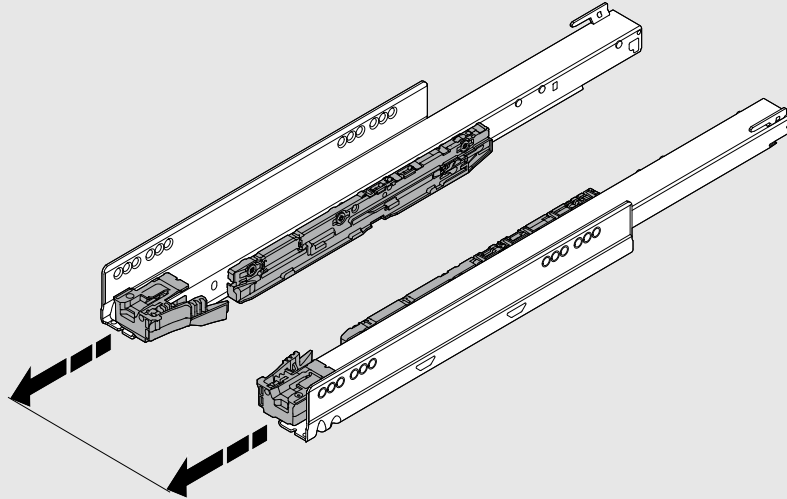


# TIP-ON BLUMOTION for LEGRABOX

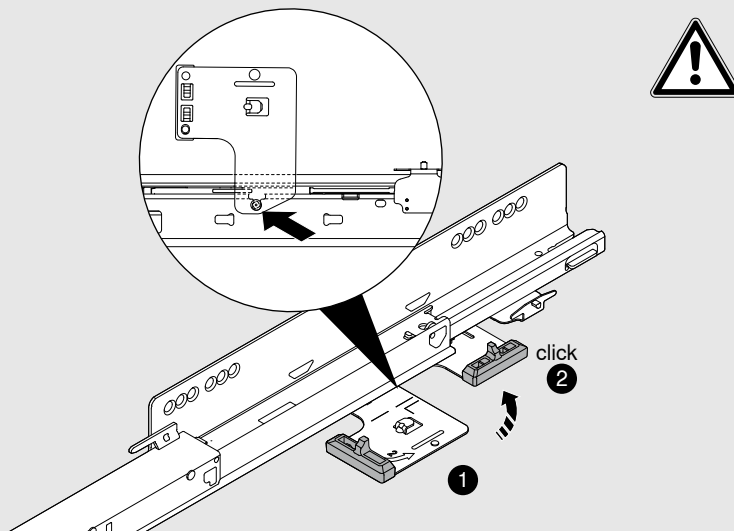


## Assembly

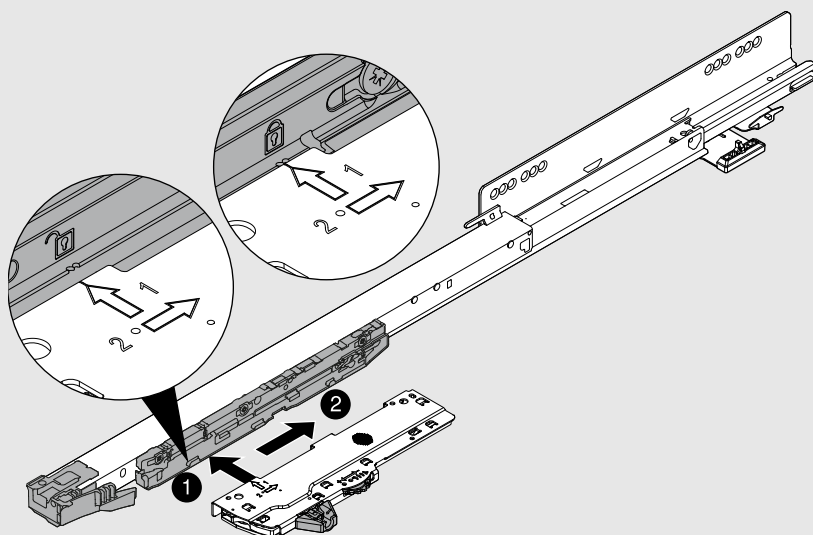
1



2

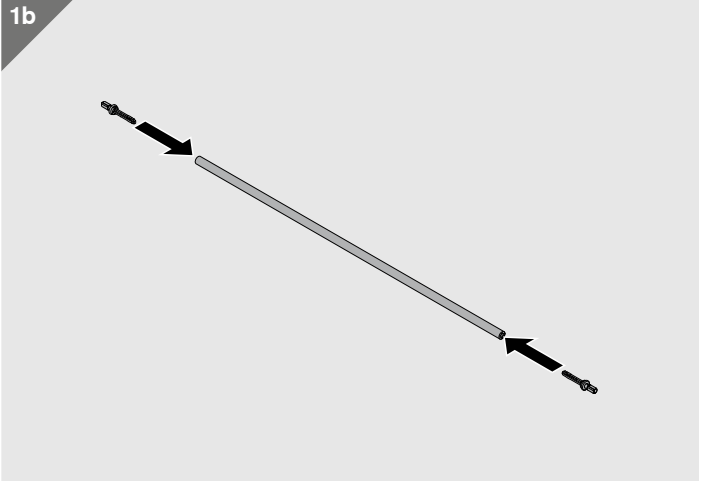
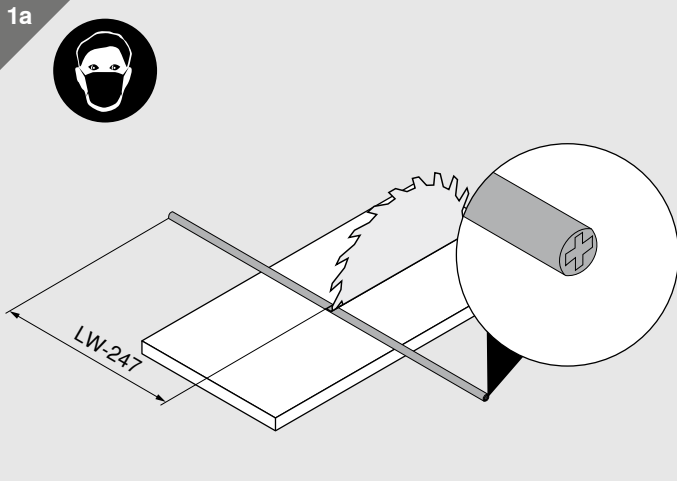


3

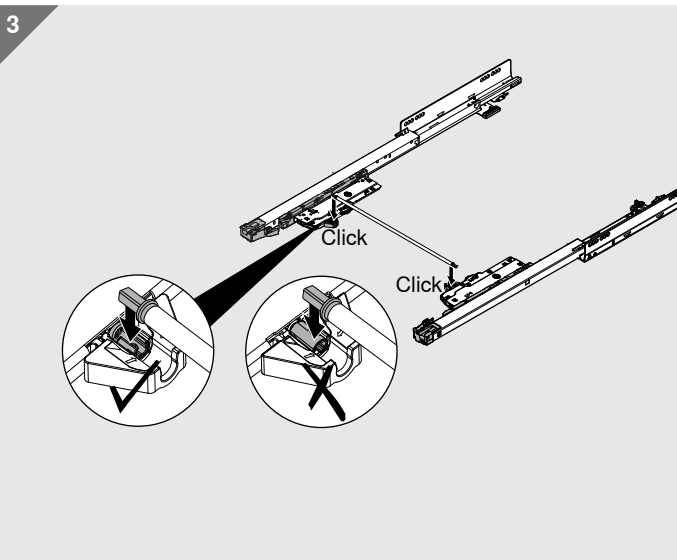
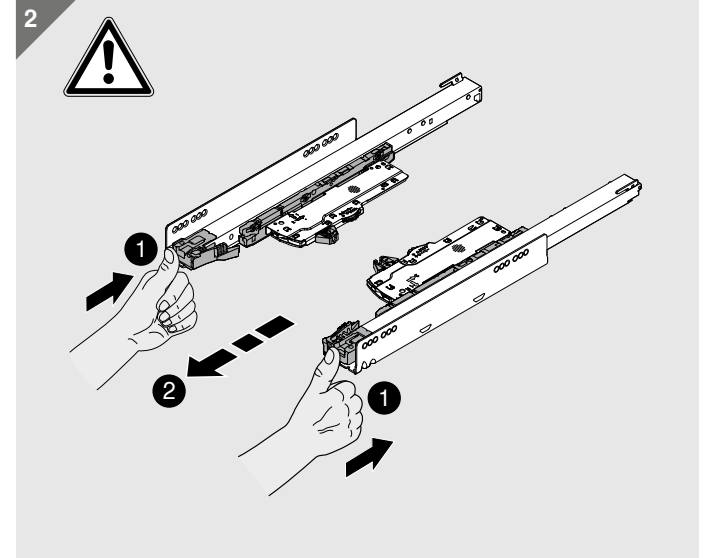
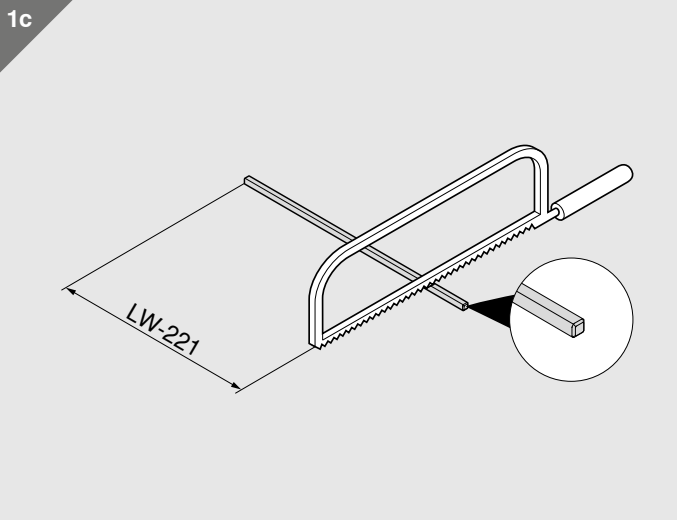


Synchronisation

For LW  $\geq$  294 mm



For LW 245–293 mm



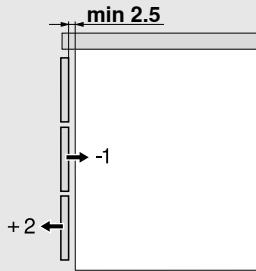
LW Internal cabinet width

# TIP-ON BLUMOTION for LEGRABOX

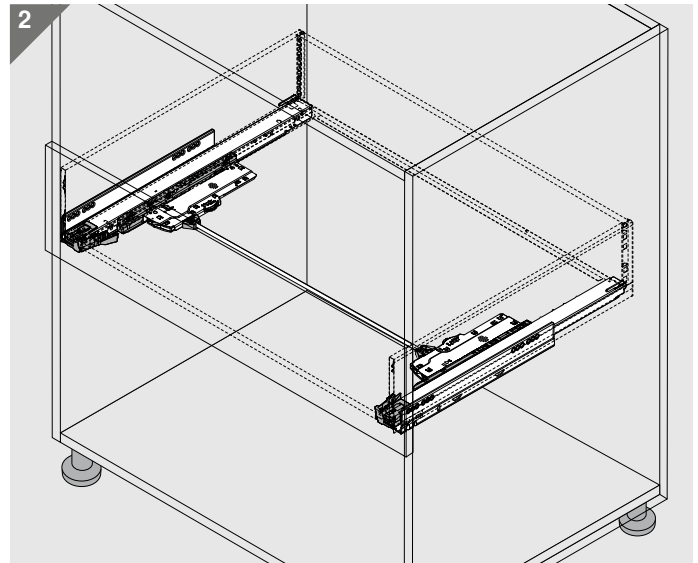
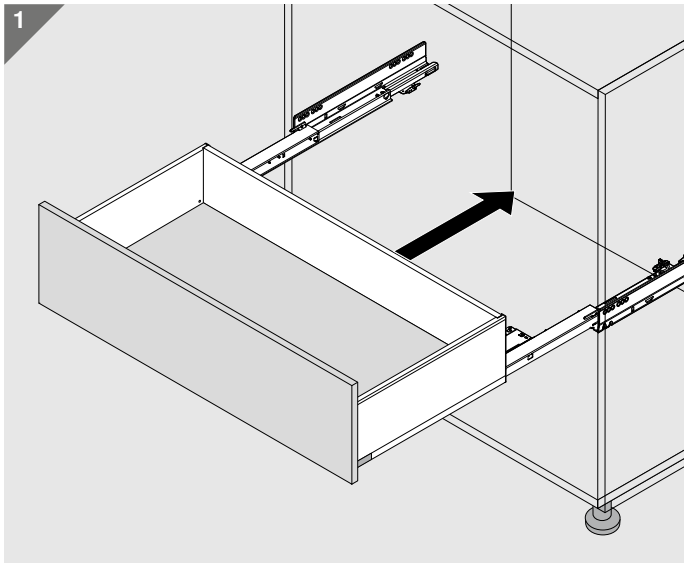
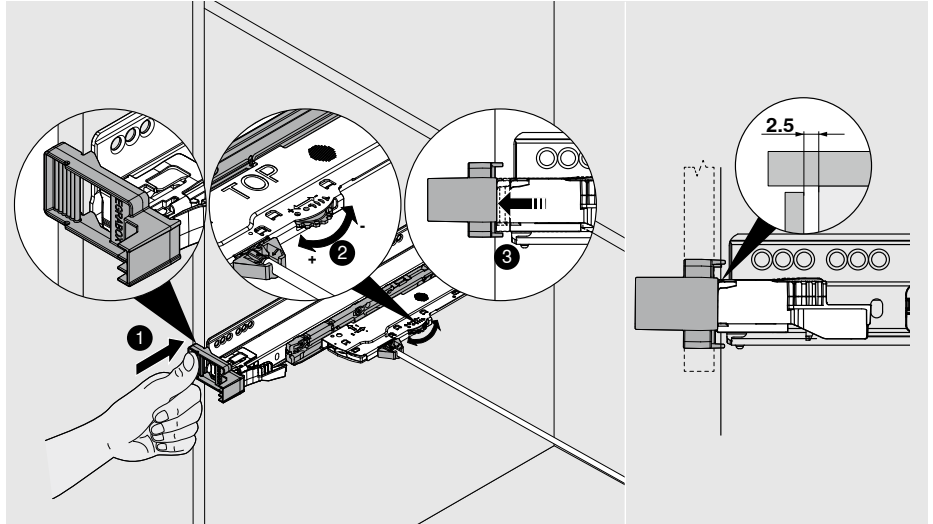


## Assembly

### Depth adjustment



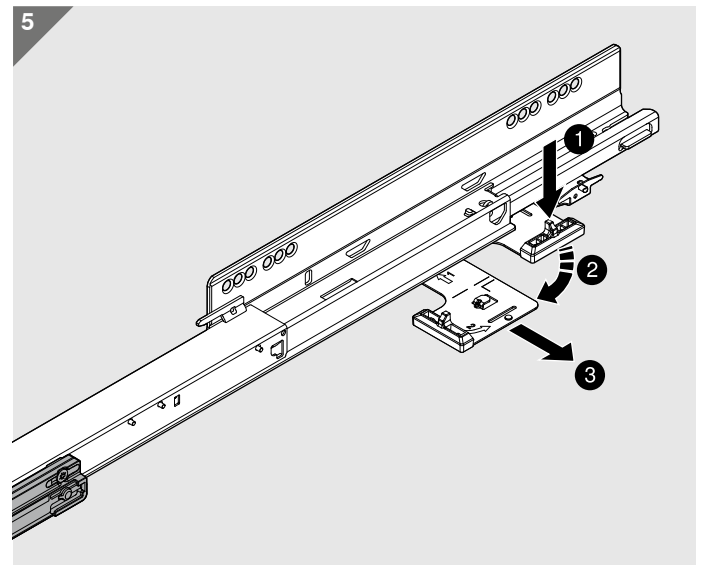
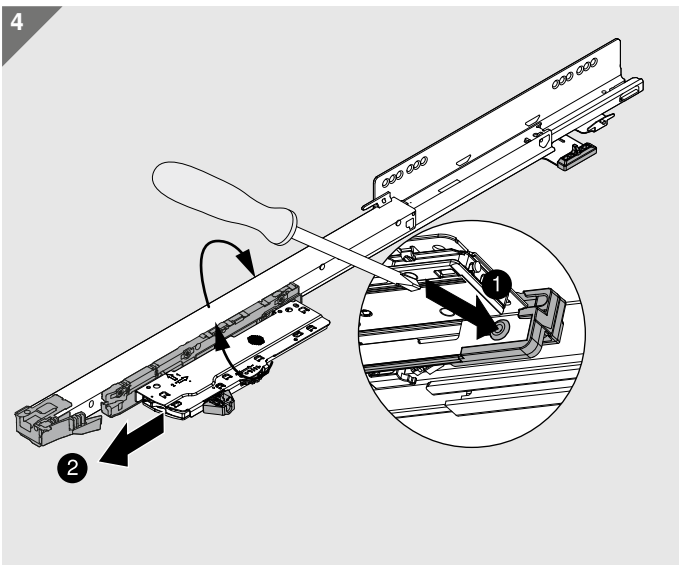
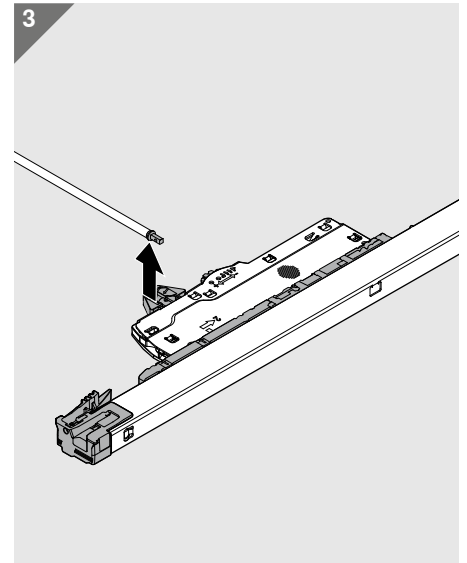
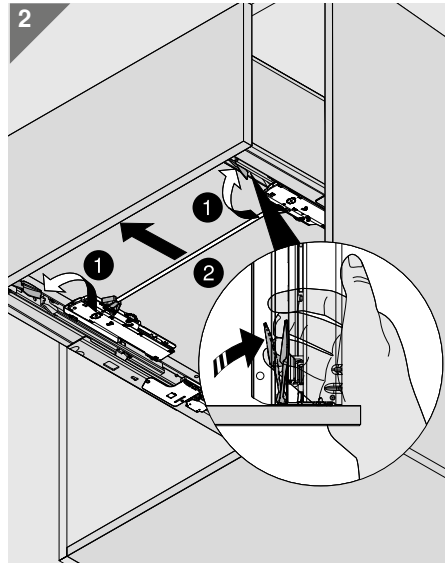
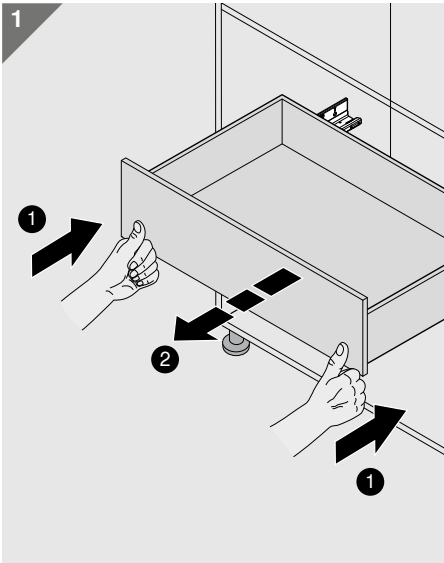
Adjust identically on each side to a minimum of 2.5 mm





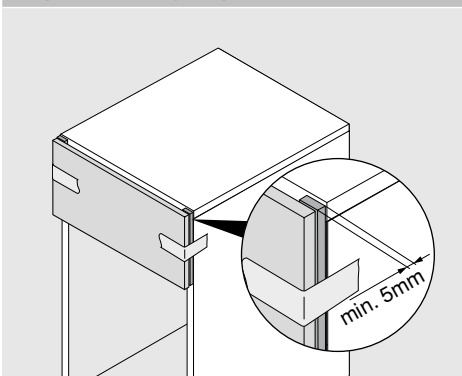
## Removal Transportation

## TIP-ON BLUMOTION for LEGRABOX

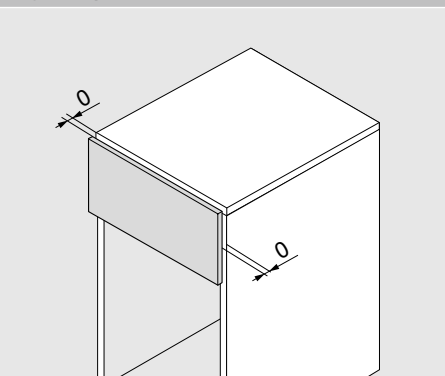


## Transportation

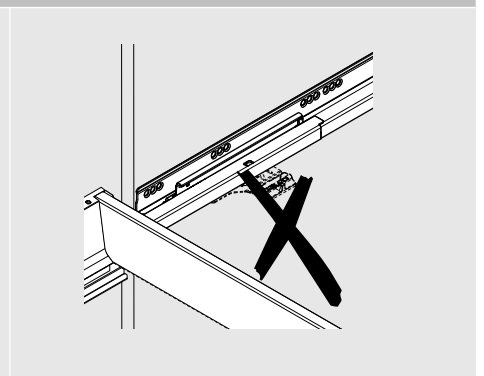
To prevent damage to pre-assembled furniture during transportation:



a) clamp an insert between front and cabinet or



b) adjust the front gap to 0 mm or



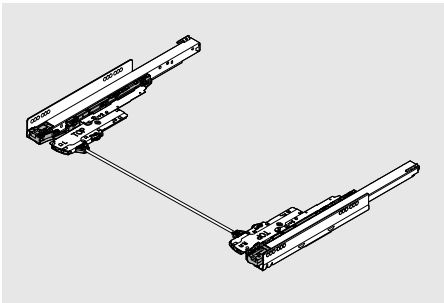
c) transport without latch.

# TIP-ON BLUMOTION for LEGRABOX



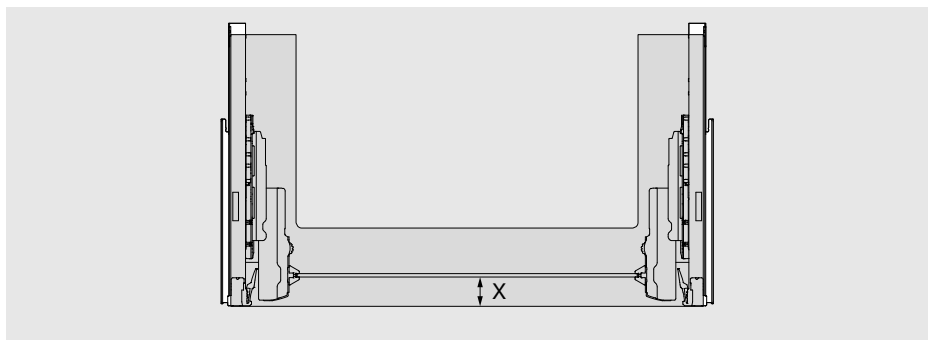
## Sink pull-out Planning Assembly

■ For planning information for TIP-ON BLUMOTION sink pull-out, see page 28

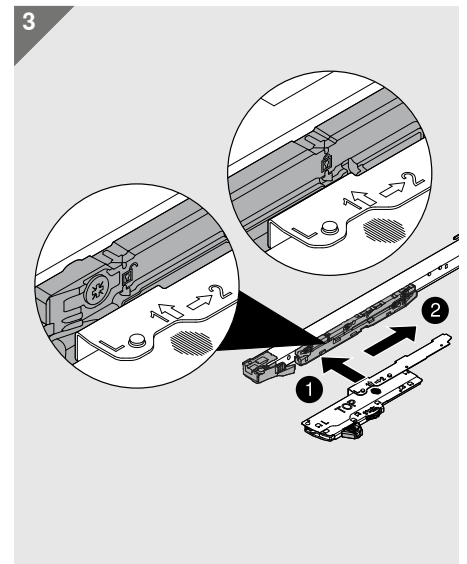
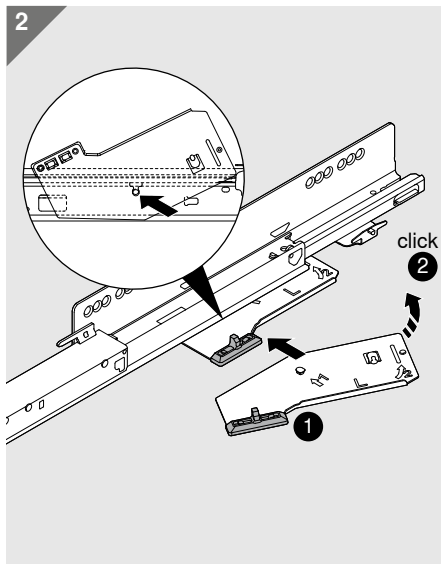
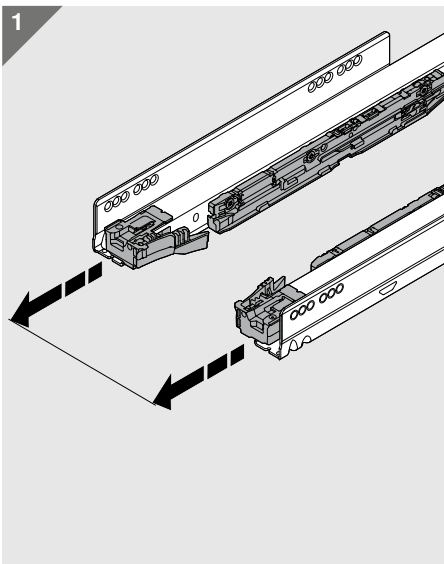


### Distance between the synchronisation linkage and the front

NL (mm)	X for 750.xxx1S
350	65 mm
400	85 mm
450	65 mm
500	65 mm
550	65 mm
600	65 mm



### Assembly



# Sink pull-out Assembly

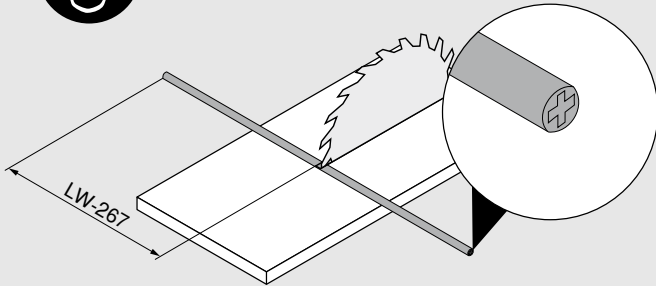
# TIP-ON BLUMOTION for LEGRABOX



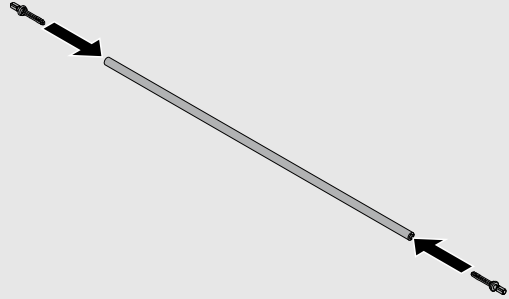
## Synchronisation

For LW  $\geq$  314 mm

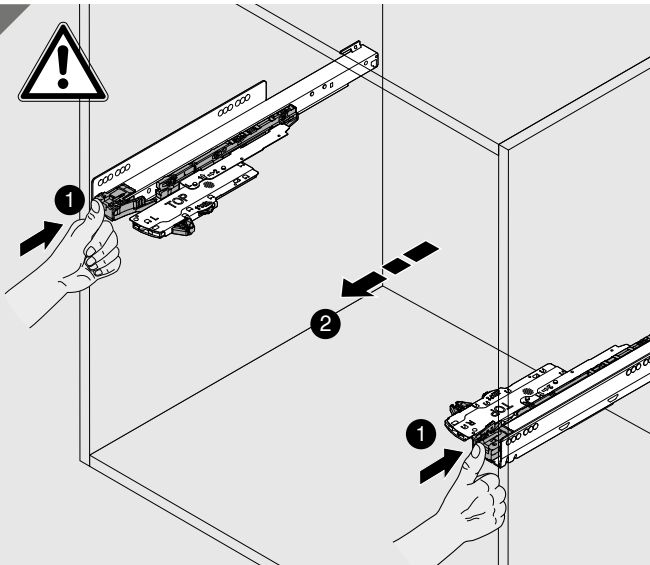
1a



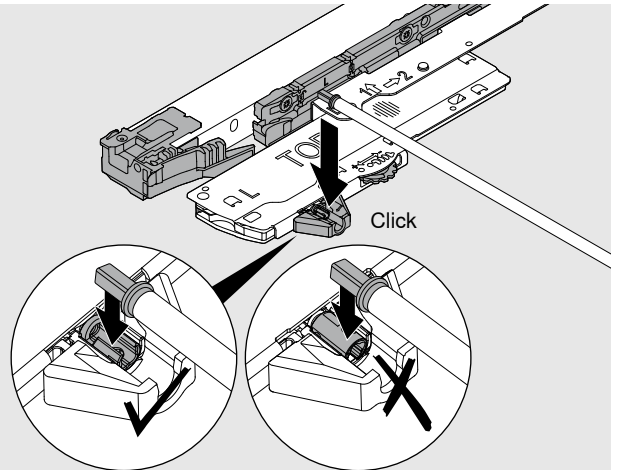
1b



2



3

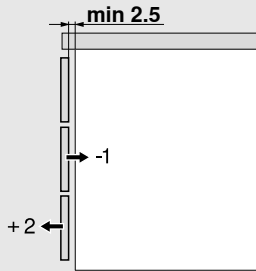


# TIP-ON BLUMOTION for LEGRABOX

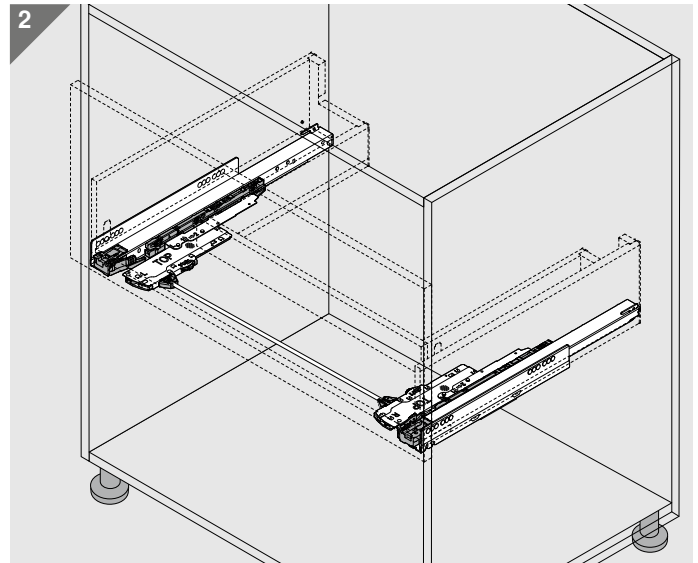
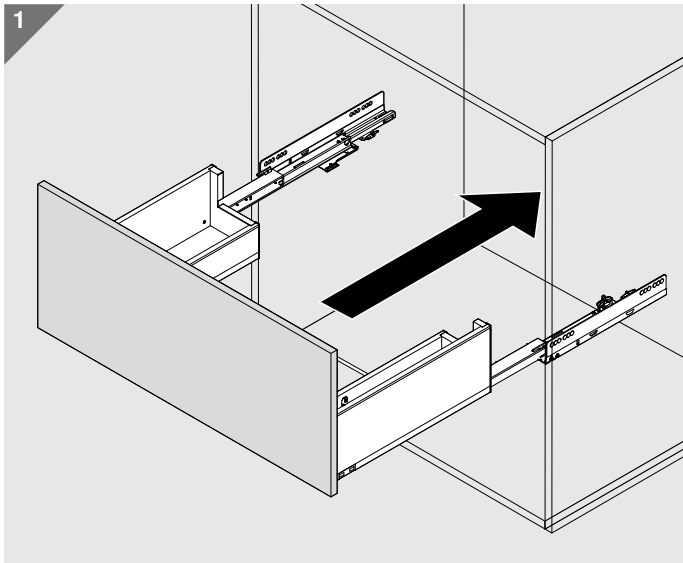
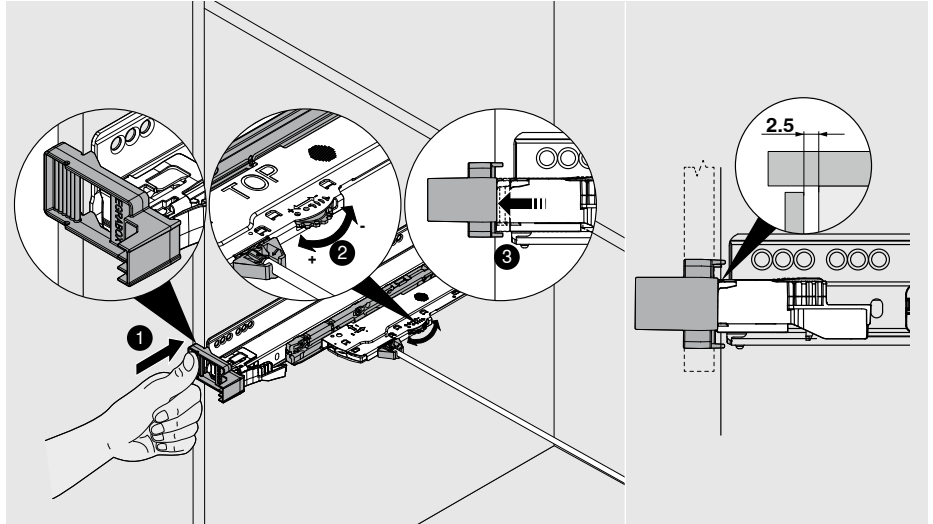


## Sink pull-out Assembly

### Depth adjustment

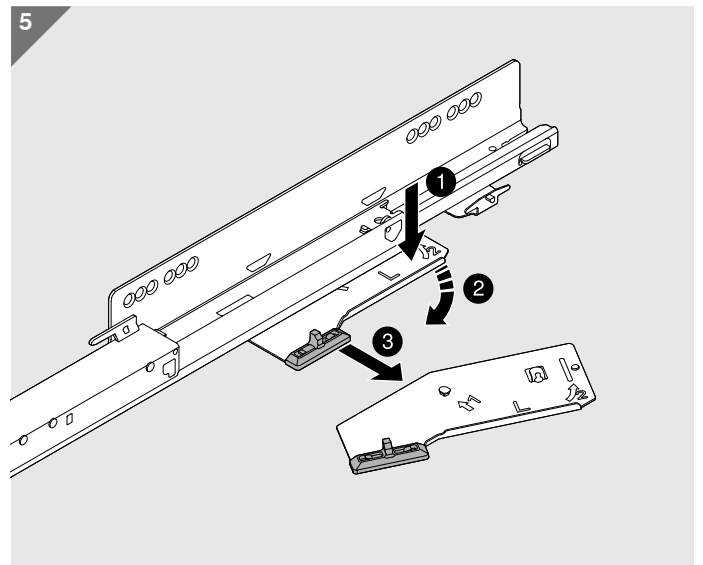
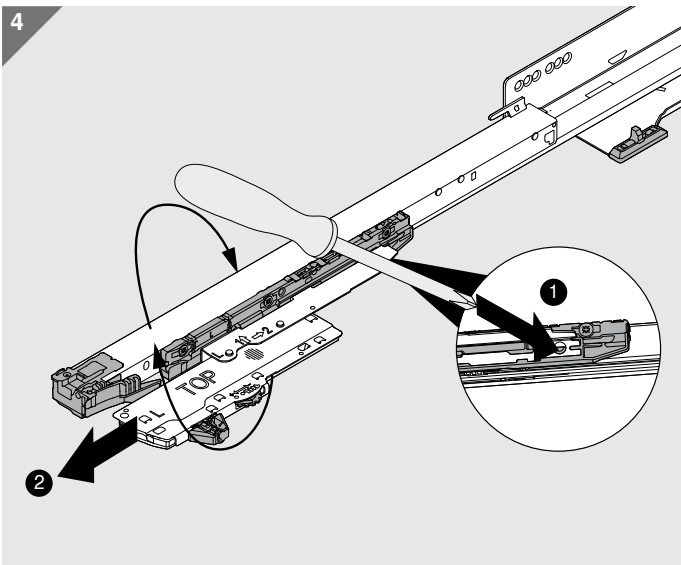
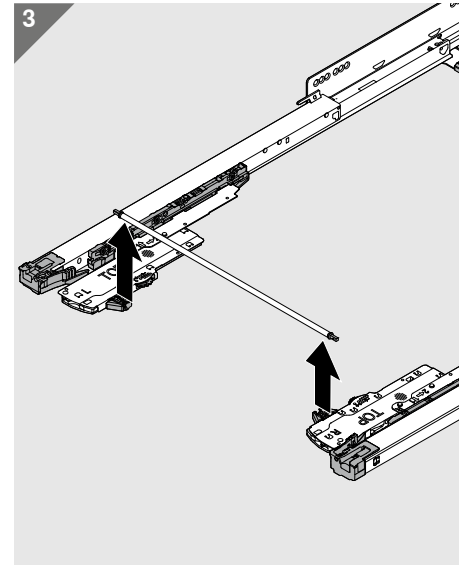
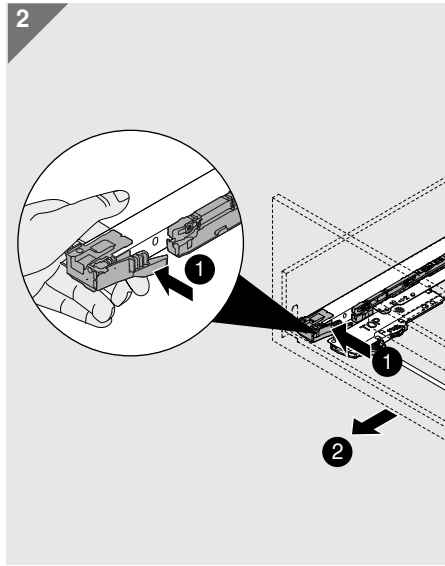
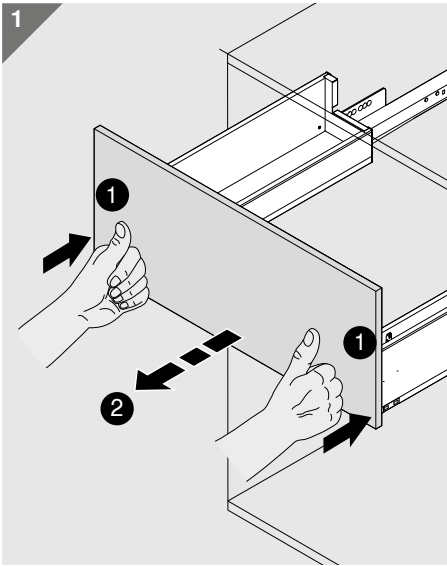


Adjust identically on each side to a minimum of 2.5 mm



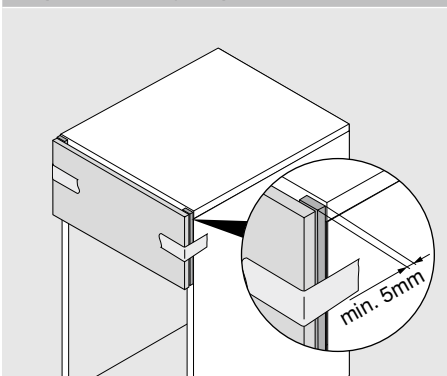
## Sink pull-out Removal Transportation

TIP-ON BLUMOTION  
for LEGRABOX

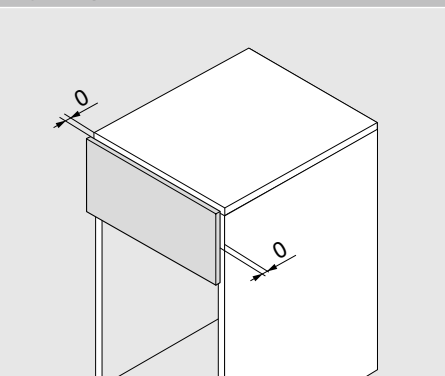


## Transportation

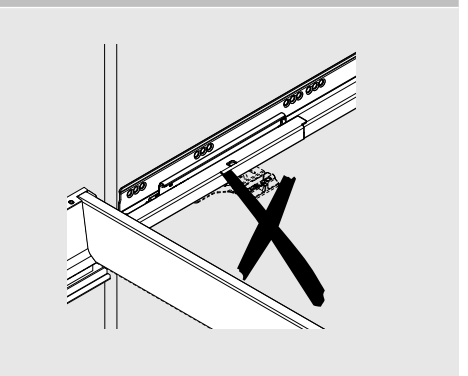
To prevent damage to pre-assembled furniture during transportation:



a) clamp an insert between front and cabinet or



b) adjust the front gap to 0 mm or



c) transport without latch.

**MOVENTO  
BLUMOTION S runner**

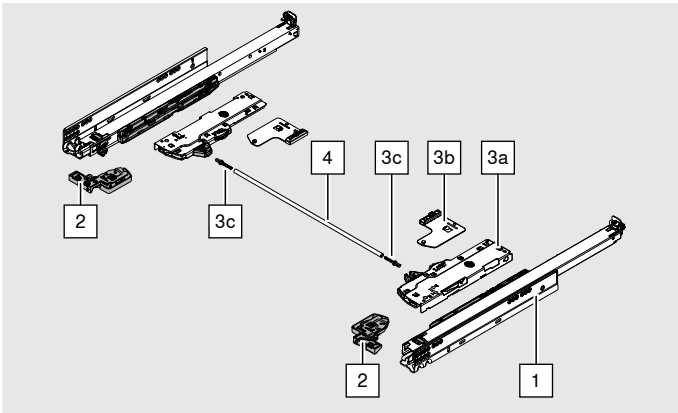


**TIP-ON BLUMOTION for  
MOVENTO – technical overview**



## Order specification

## TIP-ON BLUMOTION for MOVENTO



Make the right calculations for your TIP-ON BLUMOTION unit using the product configurator [www.blum.com/configurator](http://www.blum.com/configurator)

2	Left/right locking device		
	Order locking device separately		
	Left		T51.7601
	Right		T51.7601

1	Runners left/right		
	NL	40 kg	60 kg
	270 mm	760H2700S	
	300 mm	760H3000S	
	320 mm	760H3200S	
	350 mm	760H3500S	
	380 mm	760H3800S	
	400 mm	760H4000S	
	420 mm	760H4200S	
	450 mm	760H4500S	766H4500S
	480 mm	760H4800S	
	500 mm	760H5000S	766H5000S
	520 mm	760H5200S	766H5200S
	550 mm	760H5500S	766H5500S
	580 mm		766H5800S
	600 mm	760H6000S	766H6000S
	650 mm		766H6500S
700 mm		766H7000S	
750 mm		766H7500S	

3	TIP-ON BLUMOTION set			
	<b>Consisting of:</b>			
	3a   2x TIP-ON BLUMOTION unit			
	3b   2x TIP-ON BLUMOTION latch			
	3c   2x synchronisation adapter			
	NL (mm)	Unit	Weight (kg)*	
	270–320	S0	≤ 10	T60L7040
		S1	> 10–20	T60L7140
350–750	L1**	≤ 20	T60L7340	
	L3	15–40	T60L7540	
	L5***	35–60	T60L7570	

4	TIP-ON BLUMOTION synchronisation linkage		
	Possible for LWs ≥ 314 mm		
	Suitable for LWs up to 1370 mm		
			T60.1125W
Shaft cutting: LW - 267 mm			

For narrow LWs (alternative to 4)			
TIP-ON BLUMOTION one-part synchronisation			
	Symmetrical		
	LW 265–313 mm		
			T60.300D
Cutting: LW - 241 mm			

### Accessories

TIP-ON BLUMOTION synchronisation adapter			
	Symmetrical		
	When used with 4, 2 pieces required each time		
	LW ≥ 314 mm		T60.000D

Front gap template for TIP-ON BLUMOTION LEGRABOX/MOVENTO			
	For setting the front gap to 2.5 mm		
			65.5631

\* Recommended weight ranges (total weight of pull-out)  
for optimum opening and closing function

\*\* Can only be combined with 40 kg (760H)

\*\*\* Can only be combined with 60 kg (766H)

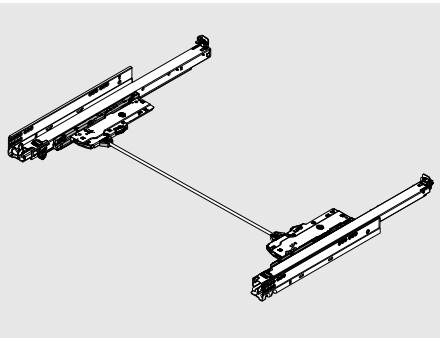
LW Internal cabinet width

NL Nominal length

# TIP-ON BLUMOTION for MOVENTO



## Planning

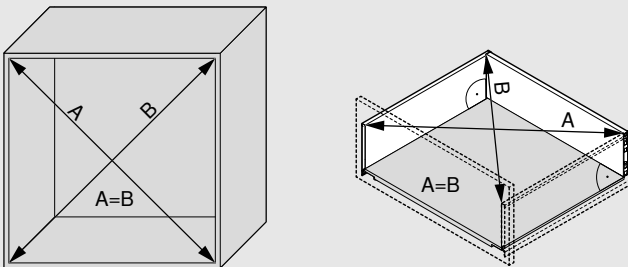


- TIP-ON BLUMOTION for MOVENTO uses the same standard installation dimensions as for MOVENTO. Please refer to the relevant product brochure or catalogue for this information
- The following planning graphics are shown as an example for a drawer



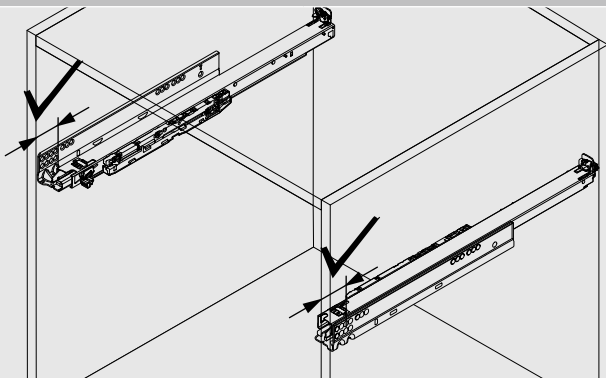
More information on MOVENTO:  
[www.blum.com/runner\\_movento](http://www.blum.com/runner_movento)

## Furniture construction



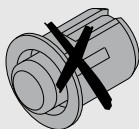
To ensure a front gap of at least 2.5 mm, precise manufacturing is required, so it should be ensured that planned measurements and angle accuracy are adhered to.

## Depth position



Observe exact depth position of both cabinet profiles.

## Front assembly – do not assemble bumpers



Bumpers should not be assembled for TIP-ON BLUMOTION!

## TIP-ON BLUMOTION synchronisation

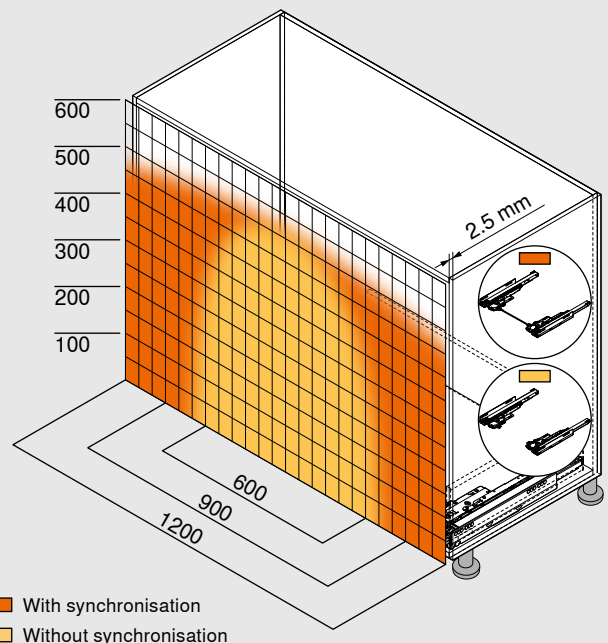
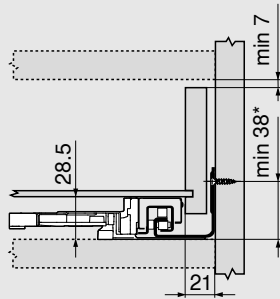


Diagram showing example for height C, NL 500 mm

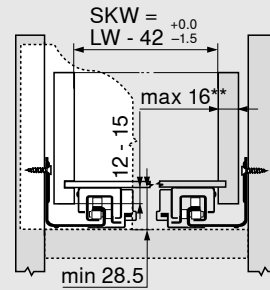
An extensive trigger range is achieved even with a low minimum front gap of just 2.5 mm. To achieve optimal function and to extend the trigger range, we recommend using a synchronisation.



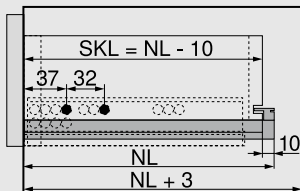
Space requirements in the cabinet



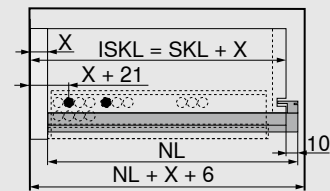
Drawer/inner drawer



Drawer



Inner drawer



Cabinet profile screw position – 40 kg

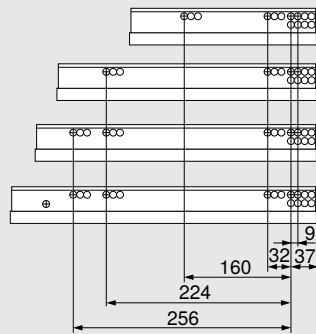
NL (mm)

270

300, 350

380–520

550, 600



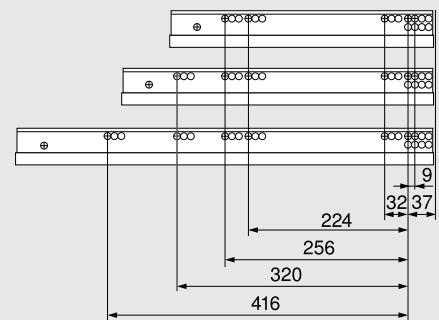
Cabinet profile screw position – 60 kg

NL (mm)

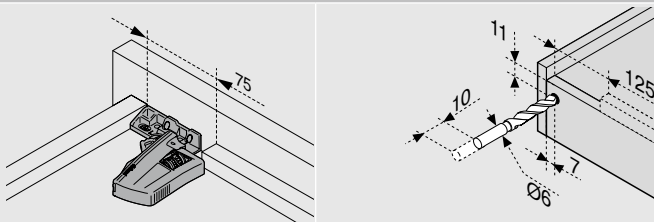
450

500–600

650–750



TIP-ON BLUMOTION for MOVENTO drawer assembly



Use drilling template T65.1000.02

LW Internal cabinet width  
NL Nominal length  
X Front thickness

ISKL Inner drawer length  
SKL Drawer length  
SKW Internal drawer width

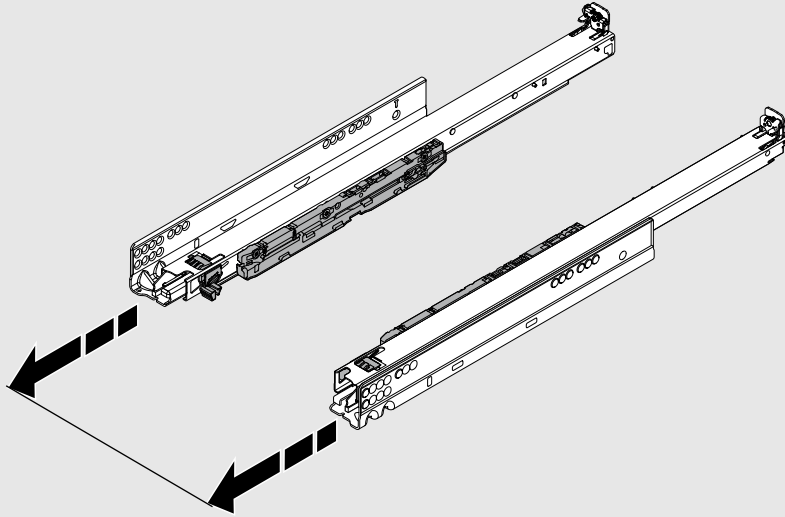
\* + 1 mm if cabinet profiles are installed before cabinet is assembled  
\*\* Limited side adjustment for a drawer side panel thickness of 16 mm, but with full tolerance utilisation of the internal width of the drawer.

# TIP-ON BLUMOTION for MOVENTO

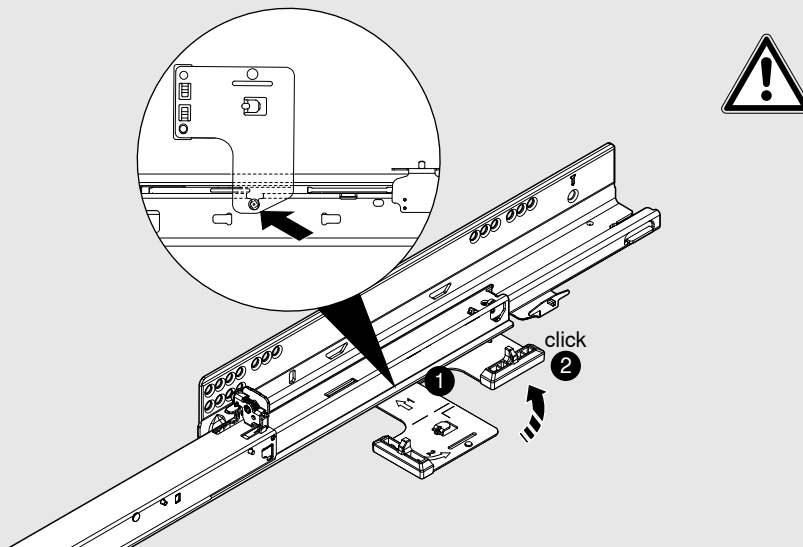


## Assembly

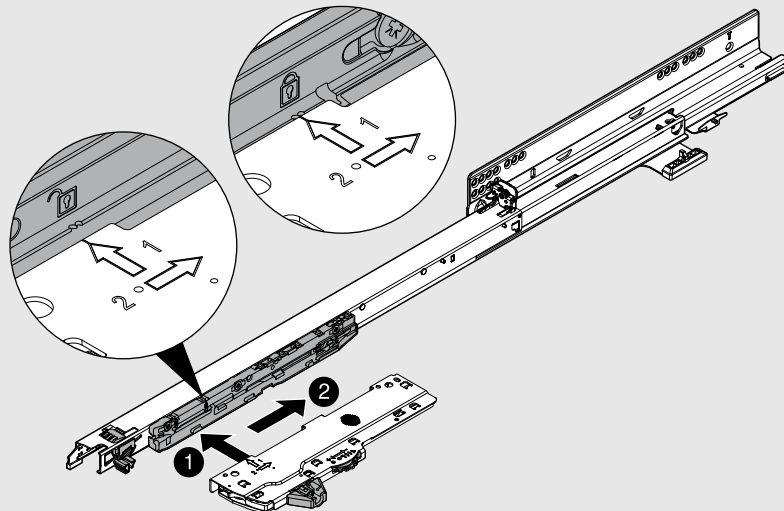
1



2



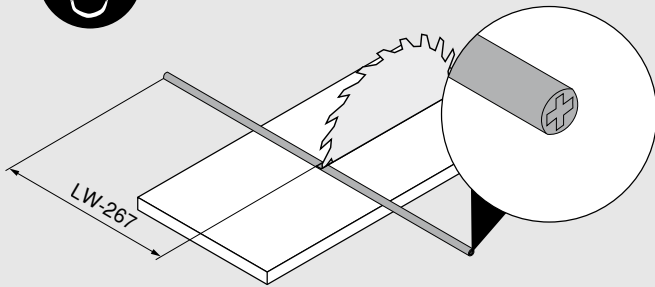
3



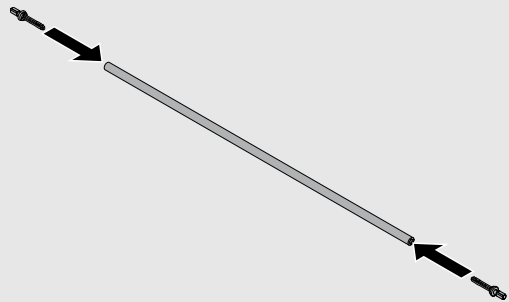
Synchronisation

For LW  $\geq$  314 mm

1a

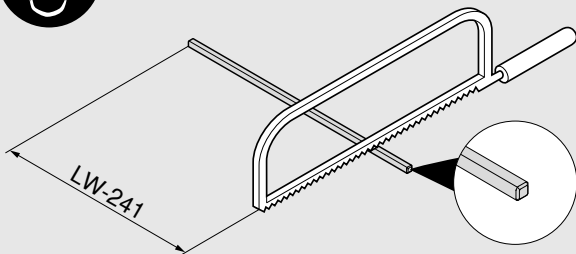


1b

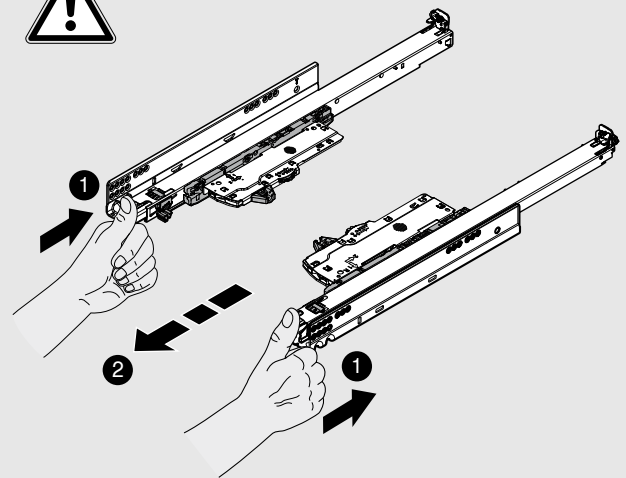


For LW 265–313 mm

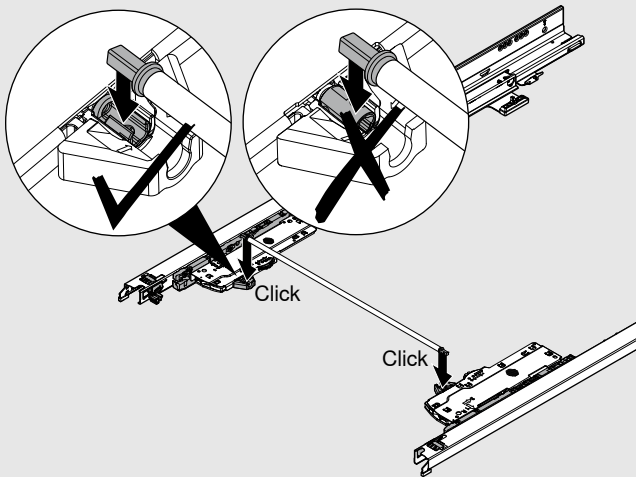
1c



2



3

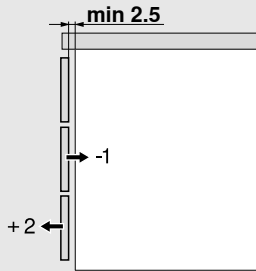


# TIP-ON BLUMOTION for MOVENTO

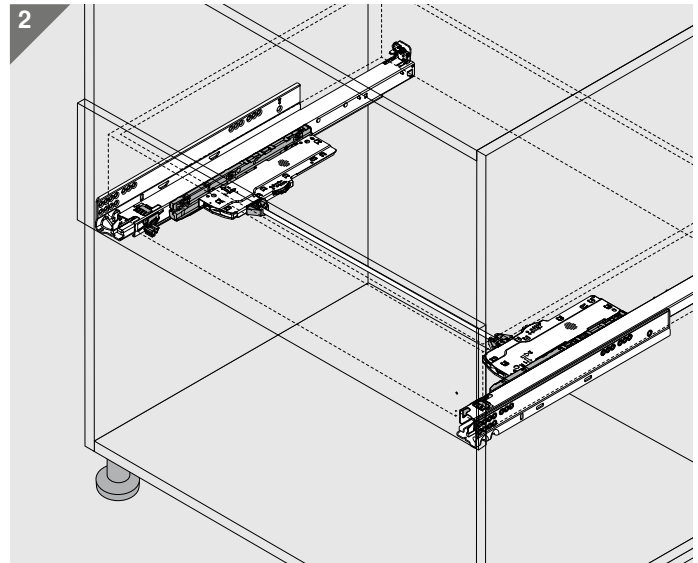
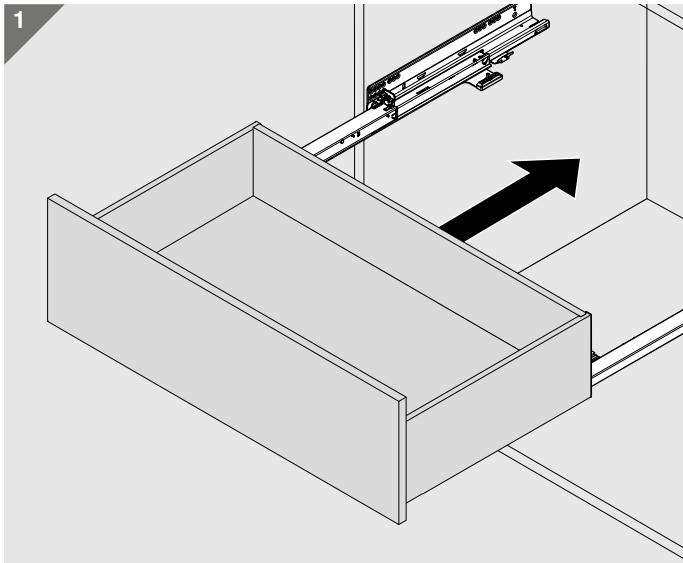
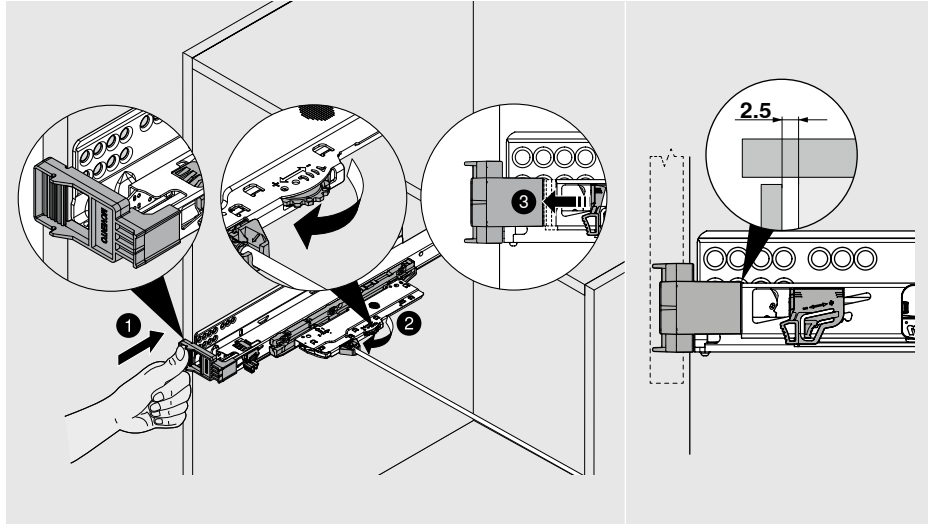


## Assembly

### Depth adjustment

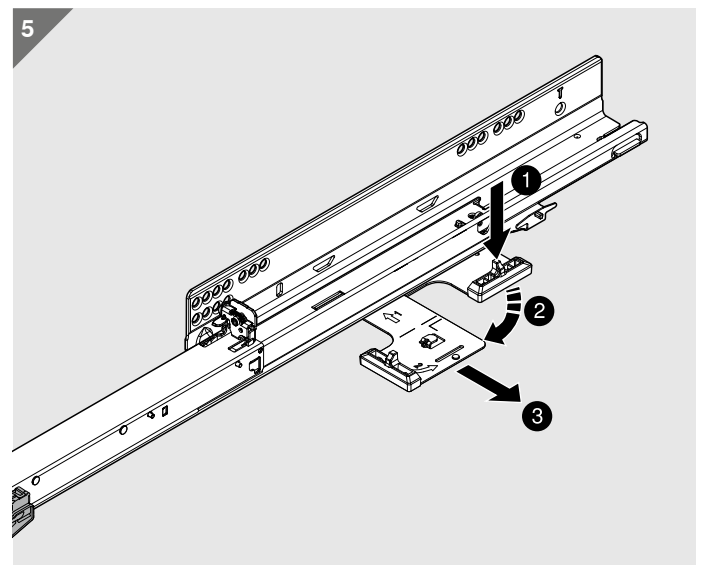
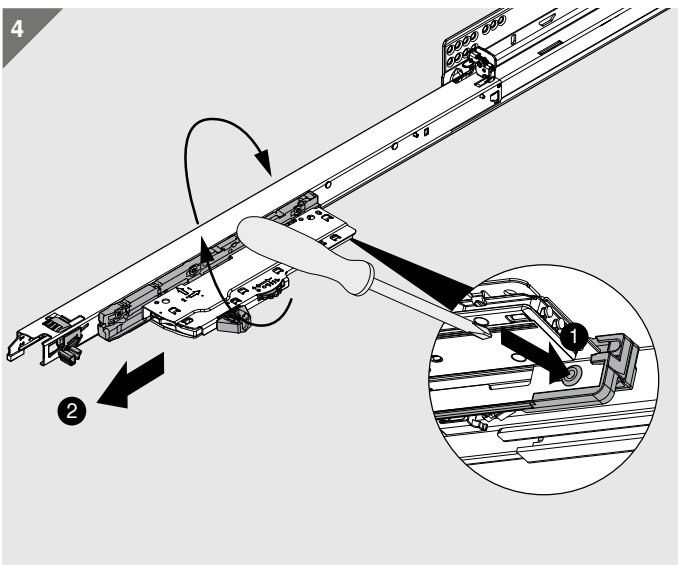
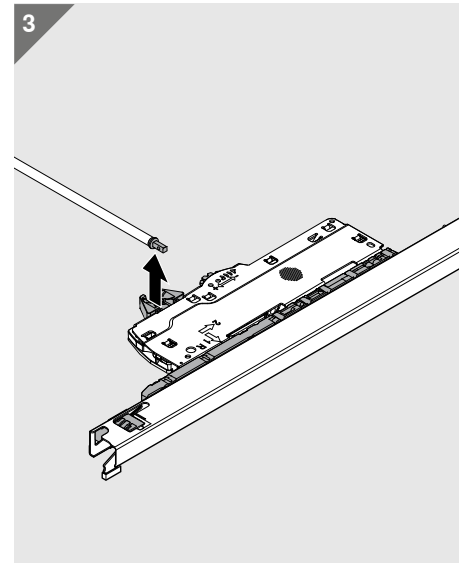
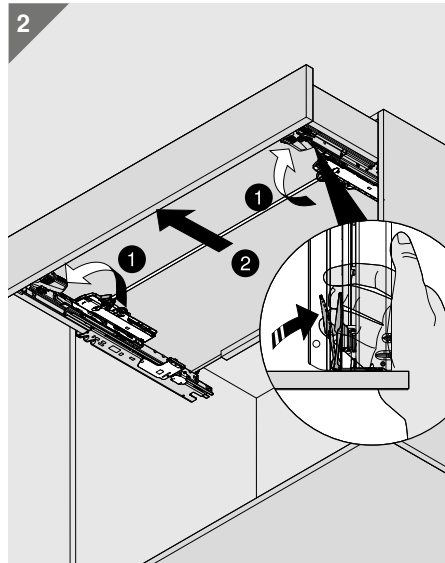
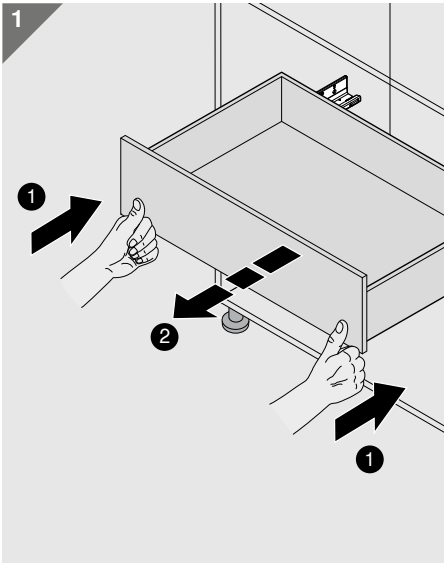


Adjust identically on each side to a minimum of 2.5 mm



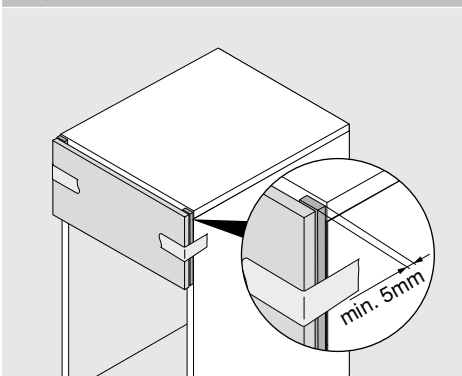
## Removal Transportation

## TIP-ON BLUMOTION for MOVENTO

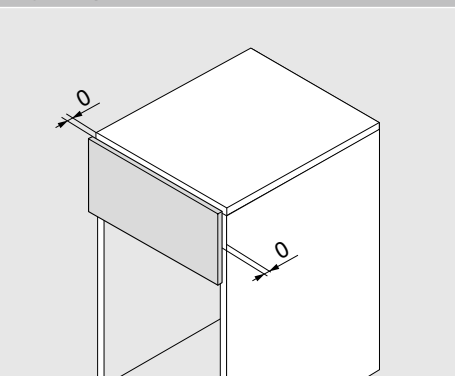


## Transportation

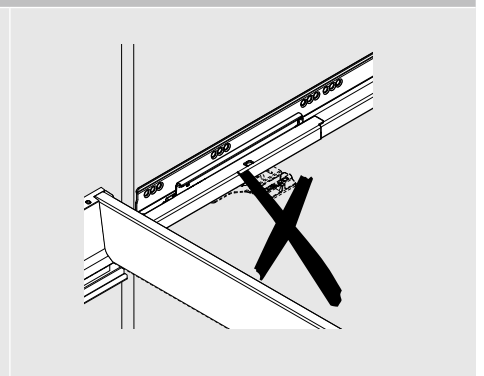
To prevent damage to pre-assembled furniture during transportation:



a) clamp an insert between front and cabinet or



b) adjust the front gap to 0 mm or



c) transport without latch.

# The company Blum

Founded over 60 years ago by Julius Blum, Blum is a family-owned company that operates on an international scale. Its strategic business segments include lift, hinge and pull-out systems. All our product developments focus on perfecting motion.

[www.blum.com](http://www.blum.com)

The Blum logo consists of a white stylized arrow pointing upwards and to the right, followed by the word "blum" in a lowercase, bold, sans-serif font. The entire logo is set against a red background.





### Blum in Austria and around the world

The company has eight plants in Vorarlberg, Austria, additional production sites in Poland, the USA and Brazil and 30 subsidiaries/representative offices. Blum supplies more than 120 markets. The Blum Group employs 7.600 people in total, 5.800 of whom work in Vorarlberg.



### Global customer benefits

“Whether manufacturer, distributor, fitter or kitchen user – everybody should personally enjoy the benefits of Blum products” – that is Blum’s philosophy on global customer benefits.



### Innovations

To support customers with innovative fittings solutions and secure long-term success for the company, we need to consistently invest in research and development, in plants and facilities and in employee training. With more than 2.100 granted patents worldwide, Blum is one of Austria’s most innovative companies.



### Quality

Blum’s comprehensive concept of quality does not only apply to products. Services and collaboration with customers and partners should also meet the same quality requirements.



### Environment

At Blum, we believe that responsible ecological behaviour has long-term economic benefits. The longevity of products is just one of many important aspects. Other important measures include the use of environmentally-friendly processes, the intelligent use of materials and prudent energy management.



### DYNAMIC SPACE

Good workflows, optimum use of storage space and top quality motion are important features of a practical kitchen. Blum’s ideas for practical kitchens are designed to bring function, convenience and ergonomics to furniture interiors.



Julius Blum GmbH  
Furniture Fittings Mfg.  
6973 Höchst, Austria  
Tel.: +43 5578 705-0  
Fax: +43 5578 705-44  
E-mail: [info@blum.com](mailto:info@blum.com)  
[www.blum.com](http://www.blum.com)

