

BROADCAST

BRANDS | NEWS | TRENDS | FEATURES

02.20

02.20 EDITION

Getting jiggy with it.



PLAY VIDEO

MINIPRESS PRO





WELCOME TO ISSUE THREE OF BROADCAST,

our bi-monthly magazine that provides inspiration and insight into various aspects of our business, and how this may help to serve yours. Within each edition of broadcast, you will find features on brands, information on latest trends within the fitted furniture market, a customer feature and the very latest news and information on what is happening within our business and how this will benefit yours.

I am immensely proud of our business and the team that chooses to work within it, my hope is that over a period this publication goes some way towards providing you with a greater understanding of our values, values that place customers at the heart of every decision.

A very sincere thank you for your continued support, we do not take this for granted and I hope you enjoy the read.

Best regards

Simon

We consistently seek to develop and improve the service we offer, always striving to make things simple. If you have any suggestions or ideas that you feel would benefit your particular business I'd love to hear from you, please feel to contact me anytime simon.ogden@ldlonline.co.uk

LDL Components Limited | Unit 12 | Graphite Way | Rossington Park | Hadfield | Derbyshire | SK13 1QH

Tel: 01225 438 188 | Email: sales@ldlonline.co.uk | Web: www.ldlonline.co.uk

GETTING JIGGY WITH IT.

Tried and tested in everyday applications, Blum's templates and jigs facilitate the assembly of all of Blum's products.

blum

Jigs and templates provide a perfect combination of high precision and practical value which is greatly appreciated both in workshops and directly on site.

Assembly must be precise to deliver the perfect motion and ease of use to inspire your customers, provide a great service and limit any problems after products are installed.

Jigs and templates improve productivity and reduce manufacturing costs. Complex and heavy components can be easily assembled with machinery and with increased accuracy, saving valuable time.

Built to last, guaranteed for life.

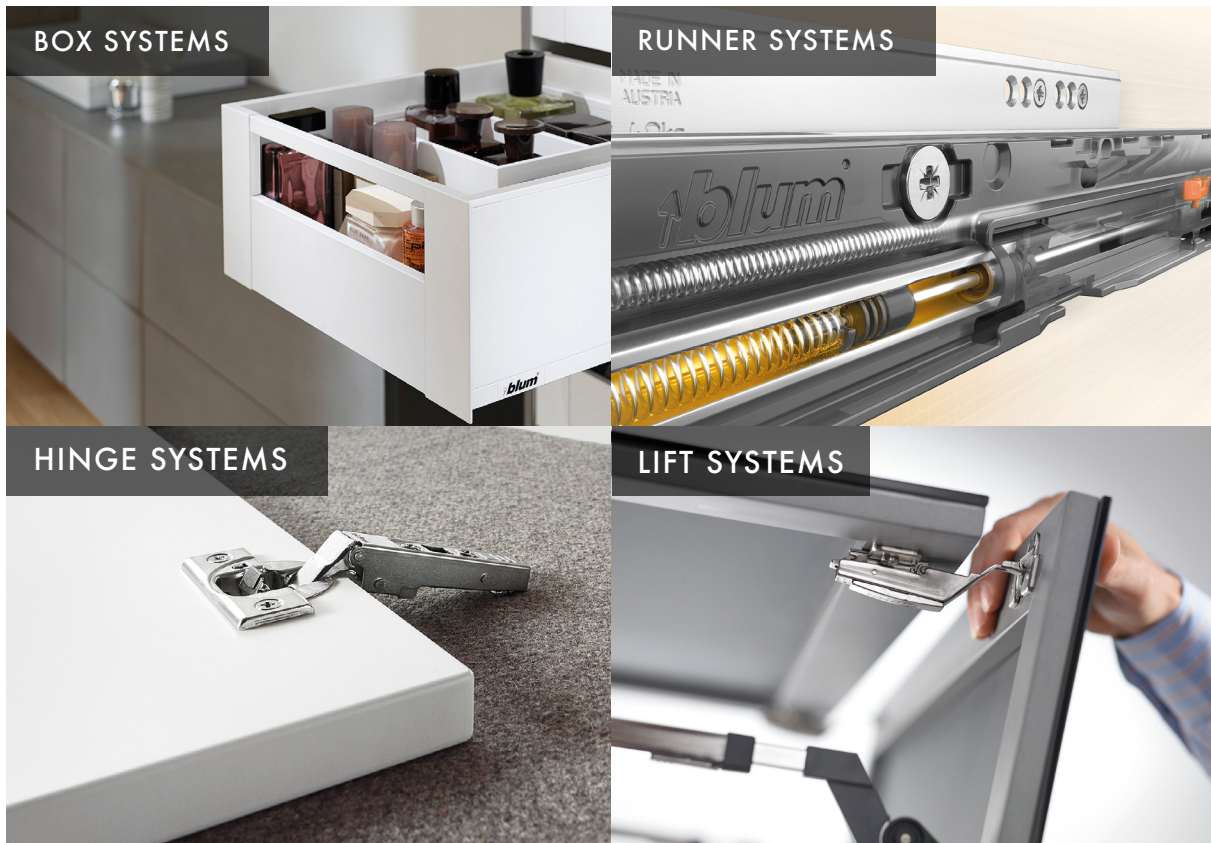


CHOOSING THE RIGHT TOOL FOR THE JOB

ONE JIG - MULTIPLE USES...



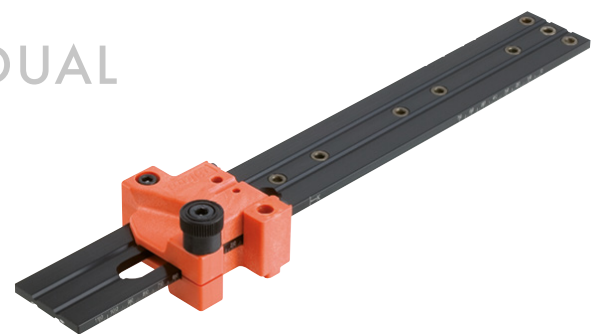
PLAY VIDEO



THE UNIVERSAL INDIVIDUAL DRILLING TEMPLATE

The Universal Individual Drilling Template offers support for pre-drilling the fixing positions for cabinet profiles, lift mechanisms, mounting and adapter plates.

The device allows you to precisely mark and measure drilling holes with ease and replaces time consuming traditional methods of measuring. Once the measure is set, the template can be used quickly and efficiently throughout the entire project, saving valuable time.



KEY BENEFITS:

- A calibrated scale for accurate settings
- One tool for multiple uses
- For system and chipboard screws
- Suitable for overlay and inset applications

You can use the template to install our products LEGRABOX, TANDEMBOX, METABOX box systems, MOVENTO, TANDEM, STANDARD runner systems, CLIP top BLUMOTION, CLIP top and MODUL hinge systems and all of AVENTOS lift systems.

QUICK AND PRECISE PRE-DRILL POSITIONS FOR DRAWER ASSEMBLY



PLAY VIDEO

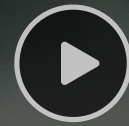
The Universal drilling template offers flexible marking and pre-drilling for front fixings including gallery, drawer back, drawer base and AVENTOS front fixings. You can calibrate the jig to ensure you don't drill the holes too deep and damage the drawer front.

KEY BENEFITS:

- Calibration for setting height and depth positions
- Precise transfer of measurements for the left/right cabinet profile
- Suitable for overlay and inset applications
- Suitable for both system screw and chipboard screw assembly
- Usable on site and in the workshop

You can use this drilling template to assemble our drawer systems TANDEMBOX, METABOX, MOVENTO and TANDEM and of course for all our AVENTOS lift systems.

MAKE HINGE ASSEMBLY EASY WITH ECODRILL



PLAY VIDEO



The Blum ECODRILL is a simple hand held tool to drill accurate hole patterns for Blum hinges. In just a few steps you can set the drilling pattern precisely and drill it with a hand drill. Driven by an electric/cordless drill, each drill bit is driven separately and retracts automatically.

The jig is invaluable if you need to regularly fit doors to cabinets, whether kitchen or bedroom furniture. The clamp fits securely to your cabinet door via a quick release fastener to ensure a stable and efficient process.

KEY BENEFITS:

- Ideal for curved doors
- Clamps to various door thicknesses up to 40mm
- Variable drilling distance from 2-8mm



Works with all Blum Hinges & AVENTOS HF

DRILLING AND INSERTION MACHINES



PLAY VIDEO

The wide range of drilling and insertion machines on offer from Blum ensures just the right solution no matter what the assembly requirement. Quick setup and easy operation ensure efficient assembly and a high-quality end result.



The MINIPRESS P is a specialist machine for drilling holes. A pneumatic feed for drilling and insertion as well as a spindle for the drilling distance setting makes working with MINIPRESS P safe and precise. As a drilling and fittings insertion specialist,

MINIPRESS P takes on the routine jobs in the workshop producing precise assembly results for cabinets, doors and frontals. Once the MINIPRESS P is set, the desired drilling pattern can be quickly made or the desired fitting quickly inserted.



The MINIPRESS P has endless assembly possibilities. You can use the MINIPRESS P to assemble all of Blum products such as the box systems LEGRABOX, TANDEMBOX and METABOX, all of the AVENTOS lift systems, the hinge systems like CLIP top BLUMOTION, CLIP top and MODUL and of course our runner systems MOVENTO and TANDEM.

A man with a beard, wearing a grey Adidas jacket, stands in a workshop. He is holding a white and grey mechanical jig. The background shows various kitchen components and tools on shelves.

“WHERE HAVE THESE JIGS BEEN ALL OF MY LIFE!”

Mark - Kitchen fitter - MLS Kitchens

Only a small proportion of fitters use jigs and templates and it's fair to say that some fitters are sceptical about using them due to their complexity and time needed to learn how to use them.

We provided Mark from MLS kitchens with a range of jigs to use on site and we weren't surprised to hear his great feedback...

What are the every day problems you find on the job?

Having over 30 years of experience within the kitchen industry, kitchen fitting can be very unpredictable and no job is ever the same. It's so important to keep within time frames as best as possible because this has a big knock-on effect when it comes to planning your time and work load.

What jigs and templates did you find most effective?

I used a combination of three Blum jigs - the Ecodrill, the Universal Drilling Template and the Universal Individual Drilling Template. Working with all these three jigs saved me a full day's work - when it comes to the end of a job, you are always fighting for time, so to know that I now have these tools to help me out is a massive relief. Usually I would need to measure each drawer box every time but with the Universal Individual Drilling Template, I can measure once and know that the measurement will be accurate.

What would be your advice to other kitchen fitters?

This is no exaggeration but these tools have made a massive difference not just to my job, but to my life. You just need to spend a little time getting to know how the tools work, but it's time well spent and I will be using the jigs on every single project going forward.

MLS KITCHENS

Designer Kitchens without the designer price tag...

IT'S ALL IN THE DETAIL

THE PERFECT WAY TO MARKET YOUR BUSINESS AND BRAND...

Branding is an integral part of the LEGRABOX design with the opportunity for drawer sides to be printed with your brand name, an easy and highly visible way to market your business for the whole life span of the furniture.

 **blum**[®]

LEGRABOX COVER CAP VARIATIONS...



HINGE ARM COVERS



Clip-top hinge arm covers hide screws and add the finishing touch to your hinges, whilst still allowing easy access for adjustments. Adding your brand to the hinge arm cover completes the project perfectly.

Contact our sales team for more information **Tel: 01225 438 188**

WORTH THE WAIT

We are excited to be at the final planning stage of our long anticipated new website.

We plan to launch the new website during the month of March and we are now in the process of finalising and completing the brand new ERP system which, in a nutshell, is the brain power of the company. Alongside this, a new WMS is also being worked on which will control our stock movements seamlessly to provide you with the best possible website experience.

The website will be responsive and mobile and tablet friendly and we are hoping will provide our customers with a flawless browsing and shopping experience. The progress of technology has changed the way our businesses operates and we understand technology helps us to provide our customers with a better service. We realise the importance of staying up to date with technology, so our business does not fall behind or miss any opportunities.

We really look forward to hearing any feedback once the website is launched!

BUILDING RELATIONSHIPS WITH JESS

Jess will be joining our new business accounts management team and is here to help in any way, shape or form.

The customer is at the heart of every decision we make. Therefore, we have created a dedicated business accounts management team to keep customers up to date with products and services and offering support and guidance. Jess will form part of this team and we think she'll embrace the new role with her positive attitude and growing knowledge within the industry.



KEEPING OUR PROMISE

Last year we made the decision to donate to charity instead of sending Christmas cards and unwanted gifts.

As a company, we felt that the money was better spent this way and would be going to a more worthy cause. We are over the moon to be donating £1000 to our chosen charity Papyrus.



papyrus-uk.org



IT'S ALL UNDER WRAPS

We love to get feedback from our customers as this enables us to push the boundaries with new innovations and create products that customers actually want and need.

We have noticed a higher demand for different sizes of integrated waste bins within the kitchen. Customers want larger bins and more choice for recycling and segregation. The retailers and designers are feeling restricted when planning a kitchen with the lack of sizes and capacities available with the existing integrated bin solution.

We are really passionate about providing our customers with a solution to a problem, which is why we have been very busy working on a new range of waste solutions. This new range will offer so much more than any other integrated waste bin, it will be simple to install and offer large capacities.

Keep your eyes peeled at www.lidonline.co.uk for any updates on the project.



TRENDS 2020

GREEN WITH ENVY



The trend for bold dark hues was prominent throughout 2019, and as we move in to 2020, green kitchen cabinetry is set to be a new, key style in the kitchen

A dark green kitchen looks amazing with wood tones, lending an earthy and organic vibe to the room. The colour green embodies a sense of renewal and growth, so it's only fitting that it would be a top choice for leading designers, especially when it comes to kitchens.

Not only do these striking green cabinets make a statement in this kitchen, but when paired with dark green walls, the end result is completely luxurious with the gold hardware adding a touch of luxury.

Green is a colour that we often associate with nature and freshness, and, used correctly, it can be an ideal shade for a kitchen. Opting for a lighter mint green will add feel-good vibes to your space and bring a hint of playfulness to your cook space.

Image courtesy of Shaker and May Kitchens

CUSTOMER Q & A: WOOD & WIRE

What is the history of Wood & Wire?

We are a small team of designers and craftspeople with a big yet simple vision. Based in beautiful Hebden Bridge, West Yorkshire - the story of Wood & Wire is partly a story of right place, right time. Owners Jim and Tim met through a mutual friend and their love for plywood made them the perfect match. The first showroom opened up in Hebden Bridge - the sort of place where a different kind of business like Wood & Wire could really thrive.

What makes Wood & Wire stand out from the crowd?

Our plywood kitchens and furniture are timeless, not fashion-led. For us, the most important thing is to create an interior our clients will love to live with for years to come. Our work is unique to each brief, too, so you'll never see two Wood & Wire kitchens quite the same. Instead, we design meticulously for the spaces we're given, and finish every piece in the colours and veneers our customers really crave. By taking customers on a personalised journey that reflects their unique lives, we're making much more than just kitchens and furniture. We're helping make memories too.

What does the future hold for Wood & Wire?

Well, we're pretty modest when it comes to our business aspirations, in the most part we're driven by developing the skills and careers of our team. We're proud to be providing our small Pennine community with work opportunities for a designer/manufacturer who focuses on excellence of craft instead of just the bottom line and we think that shows in what we do. We are constantly designing and researching new materials with the intention of always supplying our customers with the best product we are capable of making, this will never change. So, for now, we'll carry on doing that and see where it takes us.

Words to live by?

Strive to enhance the day to day life of every customer, listen to them, understand them, design for them. Then produce something beautiful, that works perfectly and makes the customer grin from ear to ear.



WOOD & WIRE



“Strive to enhance the day to day life of every customer, listen to them, understand them, design for them.”

Are you passionate about your business? Please get in touch to be featured at marketing@ldonline.co.uk

Signature
DESIGNED FOR LIFE

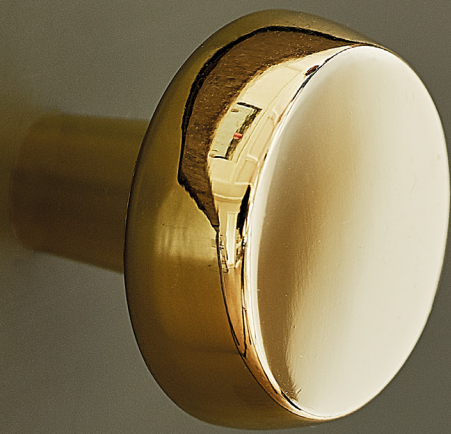


Contemporary designed high quality catches for bespoke furniture.

A collection of high quality surface mounted or flush catches - offering a sophisticated and soft-close operation when partnered with traditional butt hinges.



To view our full range of Magnet Catches, please visit our website at www.ldlonline.co.uk



View our full range of Furnipart handles at www.ldonline.co.uk

furnipart



ldl DESIGNED
FOR LIFE

LDL Components Limited
Unit 12, Graphite Way, Rossington Park,
Hadfield, Derbyshire, SK13 1QH

Tel: 01225 438 188

Email: sales@ldonline.co.uk

Web: www.ldonline.co.uk