

BROADCAST

BRANDS | NEWS | TRENDS | FEATURES

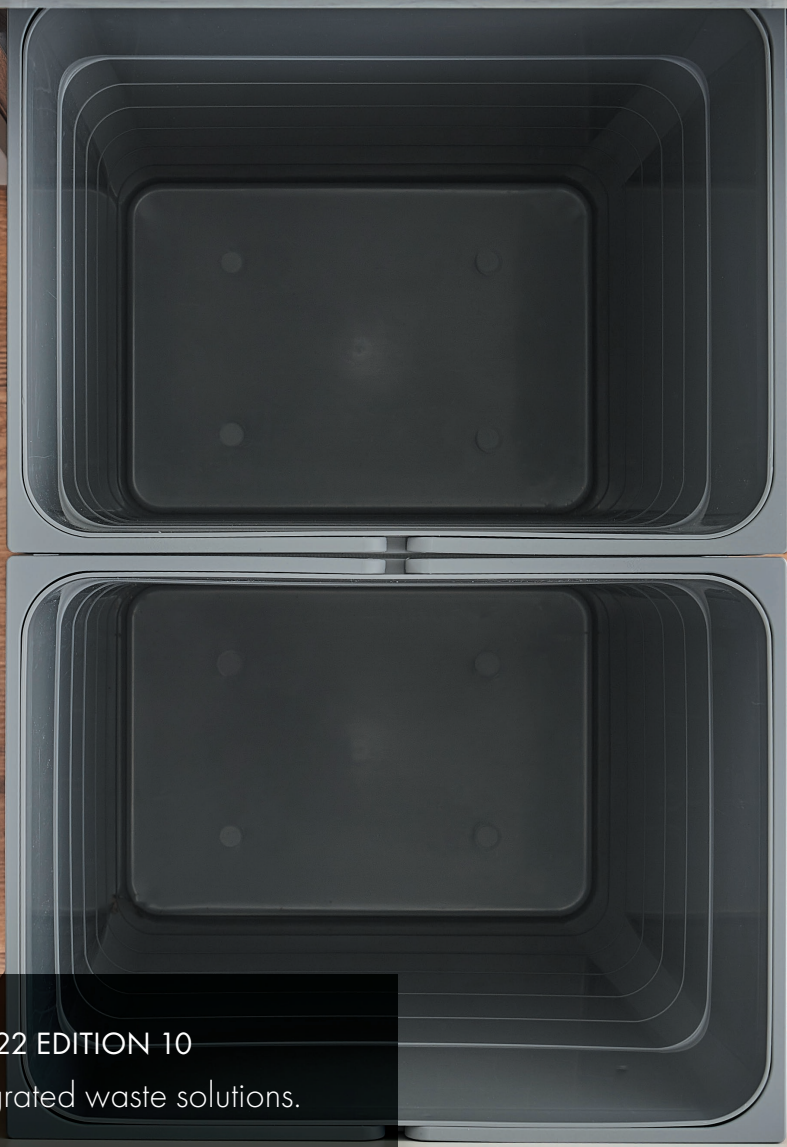


10.22





All of our products are
built to last, guaranteed for life.



OCTOBER 22 EDITION 10
ECO Integrated waste solutions.



WELCOME TO ISSUE TEN OF BROADCAST

Our quarterly magazine that provides inspiration and insight into various aspects of our business, and how this may help to serve yours. Within each edition of broadcast, you will find features on brands, information on latest trends within the fitted furniture market, a day in the life of one of our customers and the very latest news and information on what is happening within our business and how this will benefit yours.

I am immensely proud of the business and our team, my hope is that over a period this publication goes some way towards providing you with a greater understanding of our values, values that place customers at the heart of every decision.

A very sincere thank you for your continued support, we do not take this for granted and I hope you enjoy the read.

Best regards

Simon

We consistently seek to develop and improve the service we offer, always striving to make things simple. If you have any suggestions or ideas that you feel would benefit your particular business I'd love to hear from you, please feel free to email me directly anytime simon.ogden@ldonline.co.uk

LDL Components Limited | Unit 12 | Graphite Way | Rossington Park | Hadfield | Derbyshire | SK13 1QH

www.ldonline.co.uk



BUILT-IN WASTE SOLUTIONS MADE EASY FOR YOU.

The average waste bin is opened 32 times per day which makes it an important piece of equipment when planning your kitchen.

The humble waste bin plays a major role in the home and is now considered to be a crucial part when planning a kitchen.

Integrated bins sit neatly in kitchen units and remove unsightly, traditional free-standing bins from you and your guests' view, making your kitchen area a great space to entertain in!

There is a vast choice of waste bins for kitchens and it's just as well, as every household is different, so your waste separation system should be perfectly suited for your kitchen. Kitchen bins are a vital way to keep communal space clean and hygienic.

Dealing with bins can be a nuisance. They smell bad, they overflow, and the bags are hard to remove – all of that makes disposing of household waste a real pain. Considered and robust waste solutions take all the stress out of household waste management.

WHY CHOOSE ECO?

ECO is LDL's new and improved range of integrated waste solutions designed specifically to harmonise with Blum box systems, powered by Blum's innovative runner systems. The ECO range demonstrates high quality and choice from two of LDL's supply partners, Ninka and Blum for a solution that's guaranteed for life.

Bringing quality brands together...

Powered by
 **blum**®  **ninka**®

THE BENEFITS OF ECO...



Extra Strong handles - Handles are extra strong thanks to the glass fibre woven into the material, diminishing breakages.



The perfect place to store bin bags!

Odour trap shelf - The odour trap shelf sits neatly across the complete bin system to prevent smells from escaping.



The handy addition - The 4.2L bioBin comes with some ECO bins, perfect for hanging on the kitchen cabinet door to aid with food preparation.



Optional lids available - Pick and choose which bins to keep covered and which to keep free for easy access.



Powered by Blum - Designed specifically to harmonise with Blum box systems and powered by Blum's innovative runner systems.




No wasted space - The ECO range utilises the entire footprint of the cabinet with no wasted space - allowing for larger bin capacities.



Easy waste segregation - Comes with a set of 4 colour coded stickers to help segregate different types of waste easily. A great way to educate young children on the importance of recycling.



Easy Installation - Incredibly simple to install with Blum & Ninka components being fully assembled.



A WASTE SOLUTION TO SUIT EVERY CABINET...

We understand that different kitchens have different requirements, from larger bin capacities to well considered recycling and segregation needs, ECO caters for all environments and is available in all popular cabinet widths.





The number of compartments, style and location are just some of the considerations when choosing a waste bin. ECO comes in a range of cabinet sizes and a choice of different segregation options.

Choosing different sizes and shapes of containers to suit different sorts of waste saves time spent sorting - a perfect solution for busy households. For smaller kitchens, a more compact bin will help save valuable space.

ECO-TOP

PRODUCT FEATURE

10

The strong and sturdy top mounted bin. Works in partnership with Blum TANDEMBOX drawers.

The ECO-top is available in light grey and dark grey and comes in cabinet widths of 400mm, 450mm, 500mm & 600mm. Various waste bin configurations are available.

[View all the configurations at www.ldonline.co.uk](http://www.ldonline.co.uk)

The Blum TANDEMBOX drawer system incorporates soft-close functionality that closes silently and effortlessly.



Stability bracket - The stability bracket adds extra strength to the waste solution, especially useful when larger bins are being used. The bins are not compromised, even with a heavy load. Also suitable for shaker doors - the wide fixings points ensure a secure fit.



ECO-top easy installation - Blum components pre-assembled around a Ninka frame keep installation time to a minimum. Simply fix the runners to the cabinet, seat the frame and drop in the waste bins. Simple!



ELECTRONIC HANDS-FREE OPENING.

The ECO-top waste solution is now available with an automatic and comfortable hands-free opening that can be used in conjunction with any ECO-top waste bin. The device sits neatly at the bottom of the cabinet and it activated by foot movement. Can also easily be retrofitted. Integrated location LED lighting, may be dimmed and switched off.

To view the full range, visit www.idlonline.co.uk

ECO-BASE

PRODUCT FEATURE

12

The strong and sturdy base mounted bin. Works in partnership with Blum LEGRABOX drawers.

The ECO-base is available in all LEGRABOX drawer colours including silk white, terra black, orion grey and stainless steel. Available in cabinet widths of 400mm, 450mm, 500mm & 600mm. Various waste bin configurations are available.

[View all the configurations at www.ldonline.co.uk](http://www.ldonline.co.uk)

The Blum LEGRABOX drawer system incorporates a soft-close functionality that closes silently and effortlessly. TIP-ON BLUMOTION is the ideal solution for handleless kitchens.





Strong & stable - High sided drawers and an additional cross divider ensure the bins won't wobble or move.



ECO-base easy installation - Incredibly simple to install and is delivered fully assembled with bins already in position.



Matting as standard - All ECO-base waste bins come with matting as standard. Matting can easily be removed for cleaning.



Odour trap shelf - The odour trap shelf sits neatly across the complete bin system to prevent smells from escaping.

To view the full range, visit www.ldlonline.co.uk

ECO-SINK

ECO-sink waste solutions have been specifically designed to fit neatly underneath the sink, cleverly utilising the space and leaving enough room for plumbing.

The cabinet excels in terms of practical organisation, hygiene and enhanced user convenience. The additional pull-out shelf gives you extra storage space, ideal for keeping additional cleaning utensils such as sponges, cleaning cloths and waste bin liners. Water protective matting (optional extra) offers the ideal protection against spillage in the sink area.



All sink plumbing fits neatly under the sink to allow space for the bins.



Available for a 600mm cabinet width.





ECO-SINK

FOR QUOOKER BOILING TAP

Available for a 600mm cabinet width.



The ECO-sink for Quooker utilises the entire footprint of the cabinet underneath the sink with no wasted space - allowing for larger bin capacities and an increase in the individual waste bins per cabinet. All sink plumbing and the 3L Quooker tank fit neatly under the sink to allow the bin to be placed in perfectly.



Optional Extra -
LEGRABOX utensil drawer

Are you a retailer?

The ECO range of waste solutions powered by Blum provide the perfect solution for every customer and are pre-assembled, making it an easy solution for the kitchen fitter. LDL offers generous showroom incentives for all of our ECO waste bin solutions. Please get in touch and learn how we can help.

Are you a manufacturer?

The ECO range of waste solutions powered by Blum come pre-assembled, making them easy to fit and stress free. Simply fix the runner into the cabinet and drop the frame into position. All bins come complete with simple installation instructions. Contact us for information on jigs and assembly devices.

CUSTOMER Q & A: KABKO

What is the history of Kabko?

Based in the Midlands, Kabko is a cabinet manufacturer that specialises in lay on, in-frame and handleless kitchens.

The business was launched in 2015 by founder Nick Holmes-Smith, having gathered extensive experience in the kitchen industry for over 30 years.

Nick's main goal was to attract and work alongside quality and professional high-street retailers, producing bespoke kitchen and bedroom furniture and providing an excellent customer experience.

A firm believer that you can't "run with the hare and hunt with the hounds", Nick said that it is these words that led to Kabko focusing on providing a market leading solution for trade only customers.

What makes Kabko stand out from the crowd?

After developing a wealth of knowledge and expertise in the sector, Nick witnessed first-hand the importance of working with innovative and like-minded businesses.

Continuously striving for perfection, Kabko uses only the finest quality products for each individual project to achieve the highest level of customer satisfaction.

Every kitchen is built one at a time at their state-of-the-art facility, and attention is firmly placed on ensuring that the current job in hand is completed to the best possible standard.

Kabko are a forward-thinking brand motivated to be the best at what they do, and they continue to evolve within an ever-changing fitted furniture industry.

What does the future hold for Kabko?

There are some exciting projects in the pipeline, and the immediate plan is to begin developing further variations to their cabinet door offering by incorporating MFC, acrylic and foils.

Following global trends, Kabko are keen to provide a wide range of internal storage solutions and accessories to their trade customers. The idea is to focus on more than just the exterior of the cabinet by considering the functionality and optimising the space within.



Kabko will also be providing a range of catalogues to cover all aspects of the kitchen, with the aim to keep things simple for their customers and continue to deliver an excellent customer experience.

Words to live by?

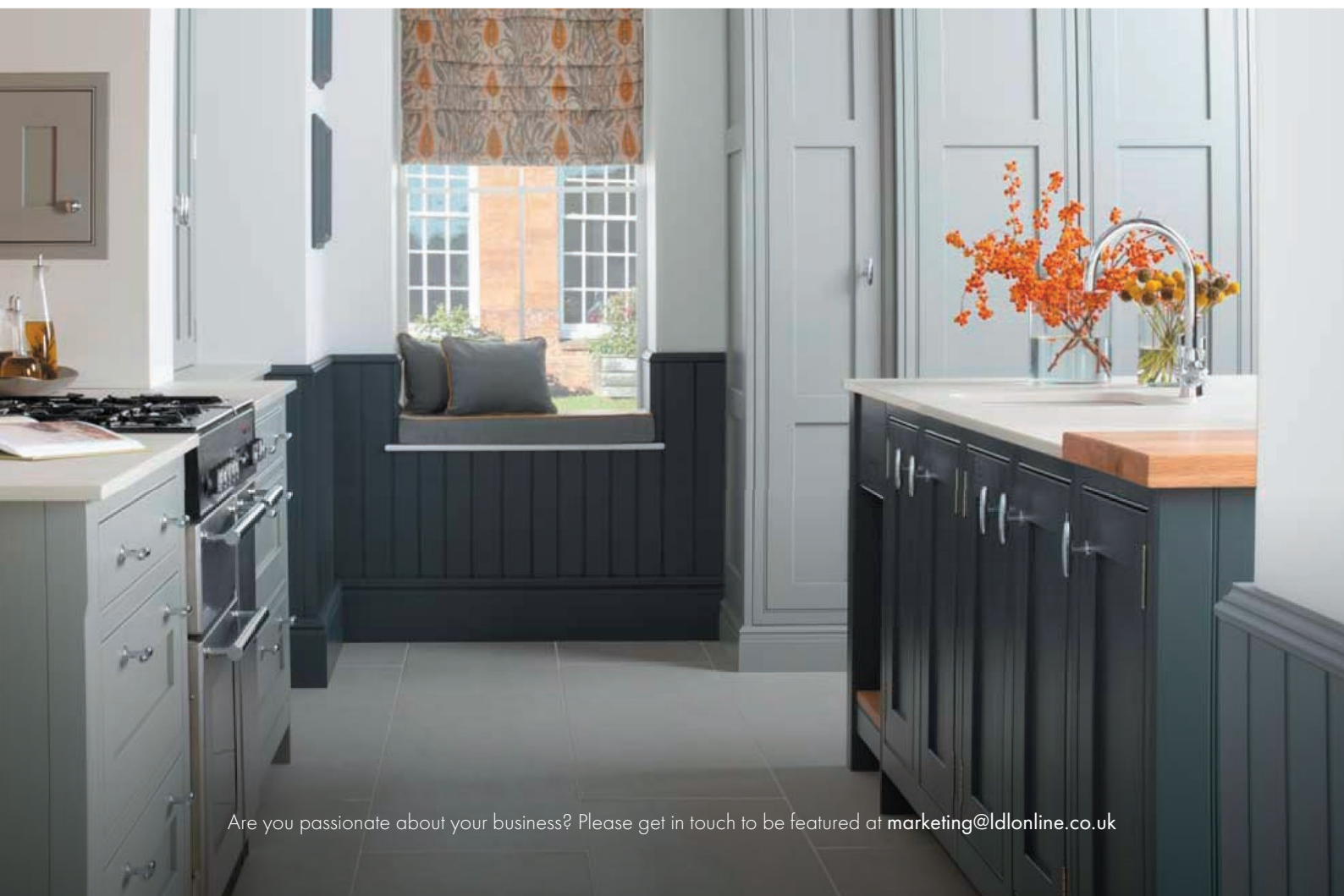
You're only as good as your last delivery.

kabko



CUSTOMER FEATURE

17



Are you passionate about your business? Please get in touch to be featured at marketing@ldonline.co.uk



TRENDS 2022 MARVELLOUS MARBLE.

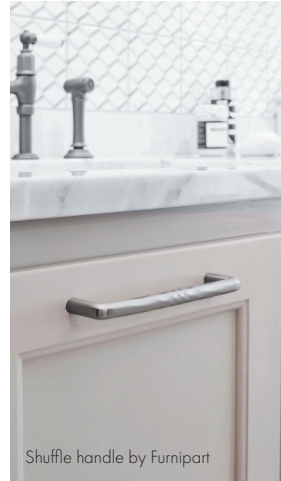
If there's one thing that's storming the style charts and shaking up interiors, it's the return of marble. Heavily veined marble is making a significant comeback in the design world and has become synonymous with high-end luxury. A popular choice for kitchens and bathrooms, it is also highly sustainable; its durability, classic attributes and ability to withstand passing trends makes it a good investment and good choice for kitchen flooring.

With its mix of colours, tones, and veining, marble not only brings a bucket load of beauty, it also adds depth and drama to any modern scheme. While marble can be undoubtedly expensive, one of the advantages is that you don't need a lot to create a big impact.

Even small elements of it can go a long way which is great if you don't have a huge budget. As a natural material, marble is complemented by other natural surfaces such as wood. Bringing added warmth and texture, wood and marble make perfect design partners.



Bench handle by Furnipart



Shuffle handle by Furnipart



Bench handle by Furnipart



Villa handle by Furnipart

Having the countertop and kitchen back splash in the same marble creates a seamless effect which is visually pleasing, not to mention serene. Almost any colour will go well with marble, don't be afraid to opt for shades that are richer, darker and more dramatic. It is easy to go 'safe' limit yourself to classic white marble but exploring different kitchen colour options could give you a more striking design.

Keeping the rest of the kitchen neutral allows the opportunity to create an eye-catching focal point. Richly veined varieties are a great way to make a statement if you are not looking to use bold colour or pattern and can look particularly luxurious when paired with metallic lighting and hardware. For double drama, team dark marble with equally intense cabinetry. It gives a surprising sense of intimacy and sophistication to a space and looks fabulous when entertaining.



AS A NATURAL MATERIAL, MARBLE IS COMPLEMENTED BY OTHER NATURAL SURFACES SUCH AS WOOD.

THANKS FOR HAVING US, PEKA!

This Summer we enjoyed a very special visit to Peka in Mosen, Switzerland. This was an opportunity to learn and understand more about our long-standing supply partner.



LDL have always been very proud to partner with Peka, but this visit took our appreciation to a whole new level. Their attention to detail, innovative ideas and passion for what they do can be clearly seen throughout every aspect of the business.

Peka have been developing and producing pull-outs, storage equipment and accessories for the kitchen and furniture industry for over 50 years. Their products are Swiss made, guaranteeing excellent quality. Not only are they practical and space-saving, they also bring order and organisation to any cabinet within the home, whilst remaining easy to use and assemble.

The tour of the Peka warehouse facility demonstrated just how much care and consideration is adopted at each stage of the manufacturing process, from the initial sourcing of the raw materials, right through to the powder coating and packaging.

The robotic manufacturing was very impressive, the speed, accuracy and durability of the robots offer unparalleled advantages to the production of the Peka products. Every step of the manufacturing process takes place under one roof. From strip steel to the packaged, ready-to-send product: the manufacturing process uses highly efficient machines to shape a wide variety of material grades and dimensions and assemble them into products.

The trip also gave us some hands-on experience with the Peka products, learning more about fitting and installation and how best to communicate the featured and benefits to our customer.

We would like to say a special thanks to everyone at Peka for a fantastic experience, we hope to visit again very soon!





IT'S THANK YOU AND FAREWELL.

Well... the time has finally come to officially announce my retirement, I will be stepping down from Managing Director as from September 1st, 2022.

The past forty years have been incredible! I started working in the fitted kitchen industry at the age of 15 thanks to joining my uncles retail business, and I've been hooked ever since. Back in 2003, I had a deep yearning to begin my own business. So, together with my original business partner Justin Murphy, I set out on my journey which today after many twists and turns has become LDL.

Though I will be sad to depart, I figure now is the right time to hand over the reigns to the existing management team feeling happy and secure in the knowledge that the business will continue to flourish as one of the most respected companies in our industry.

I'd like to say a huge heart felt thank you to all that have made the company what it is today, it's been emotional.

Simon

I'D LIKE TO SAY A HUGE HEART FELT THANK YOU TO ALL THAT HAVE MADE THE COMPANY WHAT IT IS TODAY, IT'S BEEN EMOTIONAL.

SEE US AT SICAM!

Sicam is an international exhibition of components and accessories for the fitted furniture industry. In the heart of Pordenone, Italy; Sicam is a place where you can see, touch and sample future collections and products from market leading brands.

Sicam – where technology meets design.

LDL will be working along side key brand partners to support in the future development of their latest designs and technologies.

blum

furnipart

peka
Switzerland

ninka

AGOFORM

SICAM

18-21 October 2022
Fiera Di Pordenone, Italy



COMING
SOON

PLENO MAXI

The Larder unit offering excellent use of space, easy access and a great overview for units with hinged doors.

When the door is opened, the entire contents slide out of the unit automatically and the items are clearly displayed. Pleno Maxi impresses with its extra-large shelves and optimal use of unit space in all three dimensions. It is ideal for centralised food storage or as a cupboard for tableware.

When the door is gently opened, all the shelves glide out together so that all of the contents are displayed. Its kinematic runner design means that this larder unit is incredibly easy to open, even when full. The built-in Soft-open mechanism provides added convenience.

peka
Switzerland





Available in White & Anthracite Grey
with various shelving design options.

**Look out for more
information coming soon.**

A PERFECT CABINET FOR POTS AND PANS...

Cooking at the stove is so much easier when you've got all your utensils within reach and many regard the stove as the heart of the kitchen. It's where delicious dishes are prepared, so it's handy to have the correct lid for the pan ready and waiting! Ideally, pots, pans, lids and cooking utensils should be stored close to the hob.

Wooden spoons at the ready

Whisks, wooden spoons and spatulas are best stored in a shallow drawer with a flexible inner dividing system. Having everything close to hand and easy to find makes cooking a much more pleasant experience.

AMBIA LINE frames can be adjusted to accommodate large, small, and oddly shaped utensils. Using frames that can easily be placed in any position allows for the storage of any sized items. Perfect organisation and minimalist design with everyday functionality.



LEGRABOX M Height drawer with AMBIA LINE

The right lid for every pot

Your mouth-watering stew is bubbling away in the pot. You just need to put the lid on, but where is it? This deep drawer with internal organisation means everything has a place, making it so much easier to find the right lid. AMBIA-LINE frames allows the lids to be stored upright. Its best to put the most frequently used items at the front of the pull out so they are readily accessible.



LEGRABOX C Height drawer with AMBIA LINE



Deep Drawers

Deep drawers with high backs and side panels are a practical solution for pots and pans as they stop items falling out of the sides or back of the drawer.

All advantages at a glance...

- Cooking utensils clearly arranged and readily accessible in the drawer under the hob
- Pots and lids clearly organised for practical use
- Pans are safely stored away thanks to high back and side panels



BLUM INSPIRATIONS MAGAZINE...

The annual Blum Inspirations magazine is packed full of articles on interior design, food culture and the latest trends from the world of furniture. Read stories from people around the world and find your own dream living space.



Scan to view...

Open the camera app on your phone. Hold your phone so that the QR code appears in view. Tap the notification to open the link.

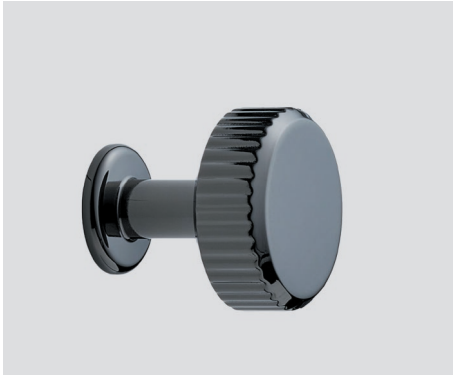
furnipart

BRAND

26

Villa by furnipart.

Villa by Furnipart. A handle inspired by the classical architecture of Greece.
Straight lines, symmetrical; harmonious in its construction.



View the full collection of handles at www.ldlonline.co.uk



LDL Components Limited
Unit 12, Graphite Way, Rossington Park,
Hadfield, Derbyshire, SK13 1QH
www.ldlonline.co.uk